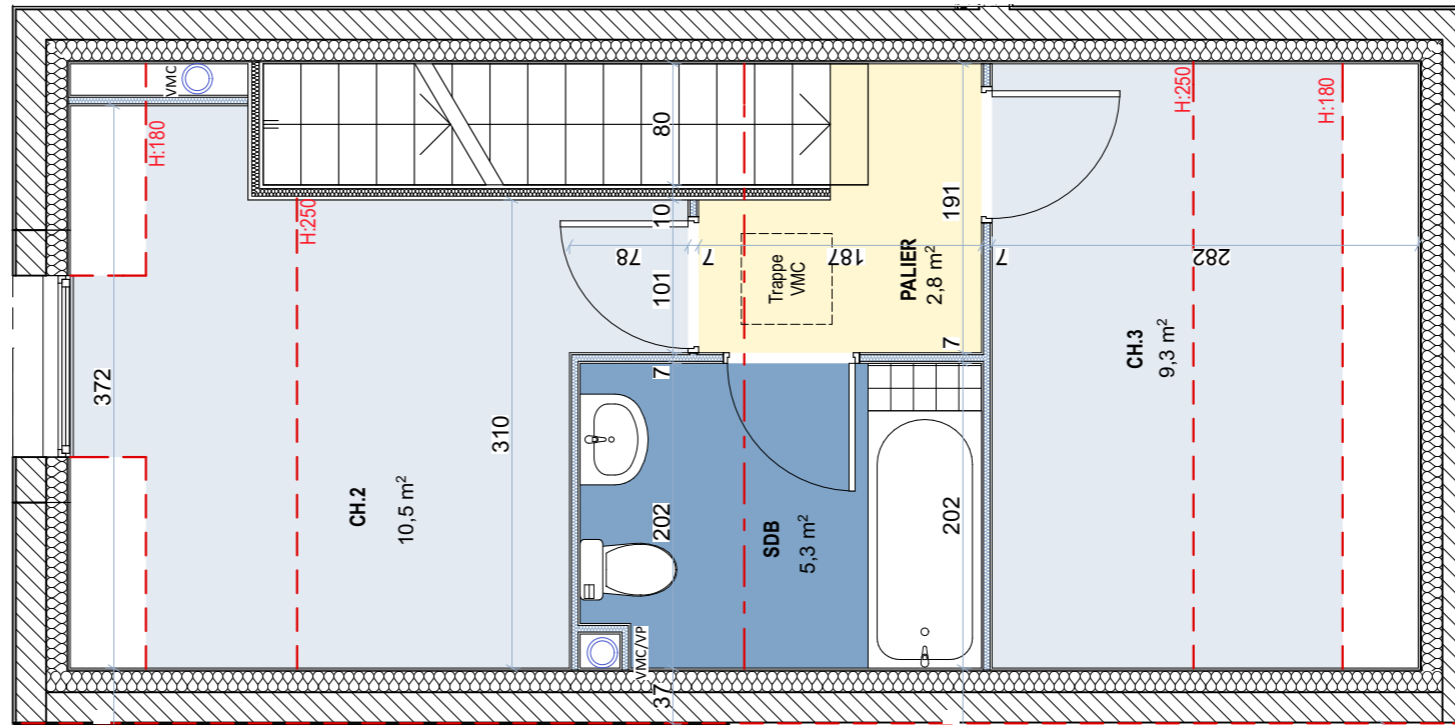
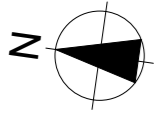
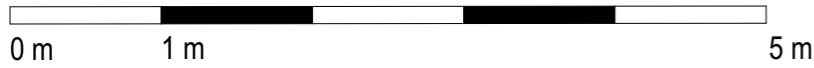
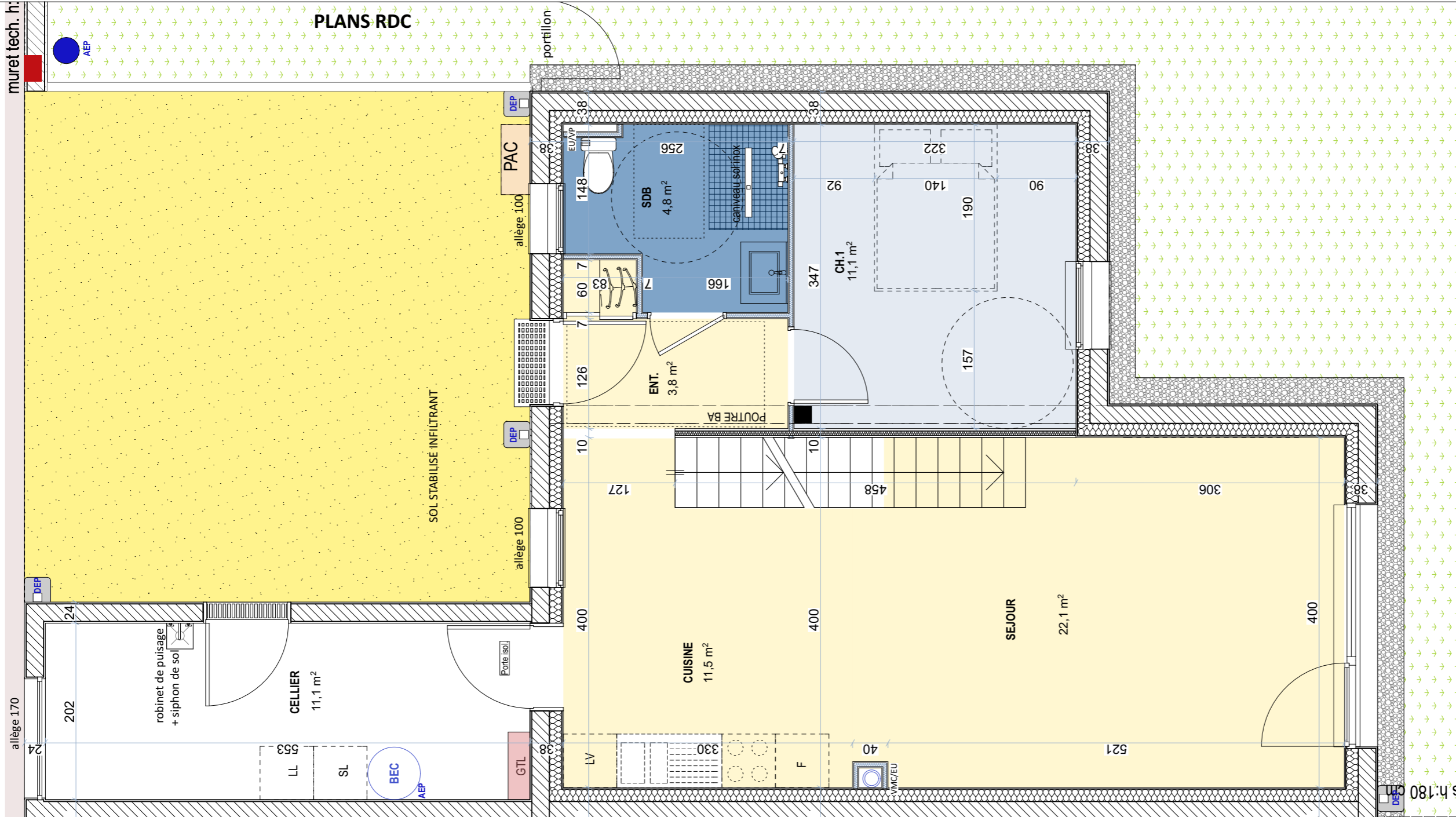


**PLANS R+1**

Echelle 1/50<sup>e</sup>



**PLANS RDC**



**LAAB**  
architectes

2, rue de Crec'h Tanet  
22 300 Lannion  
Tél: 02 96 37 18 31  
contact@laab.bzh

**LE CARRE DU ROSELIER**

Habitats groupés et collectifs  
5, rue du Roselier  
22440 TREMUSON



PLANS ETABLIS LE 22/10/2024

**M4**

TYPE	T4
------	----

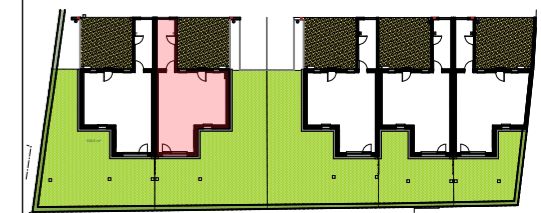
**Surfaces Habitables**

Entrée	3,80 m <sup>2</sup>
Séjour	22,10 m <sup>2</sup>
Cuisine	11,50 m <sup>2</sup>
Chambre 1	11,10 m <sup>2</sup>
Salle d'eau	4,80 m <sup>2</sup>
Palier	2,80 m <sup>2</sup>
Chambre 2	10,50 m <sup>2</sup>
Chambre 3	9,30 m <sup>2</sup>
SDB	5,30 m <sup>2</sup>
<b>TOTAL</b>	<b>81,30 m<sup>2</sup></b>

**Surfaces Utiles**

Cellier	11,10 m <sup>2</sup>
Jardin	125,00 m <sup>2</sup>

**Plan de repérage**



**LE CARRE DU ROSELIER**  
Habitats groupés et collectifs  
5, rue du Roselier  
22440 TREMUSON



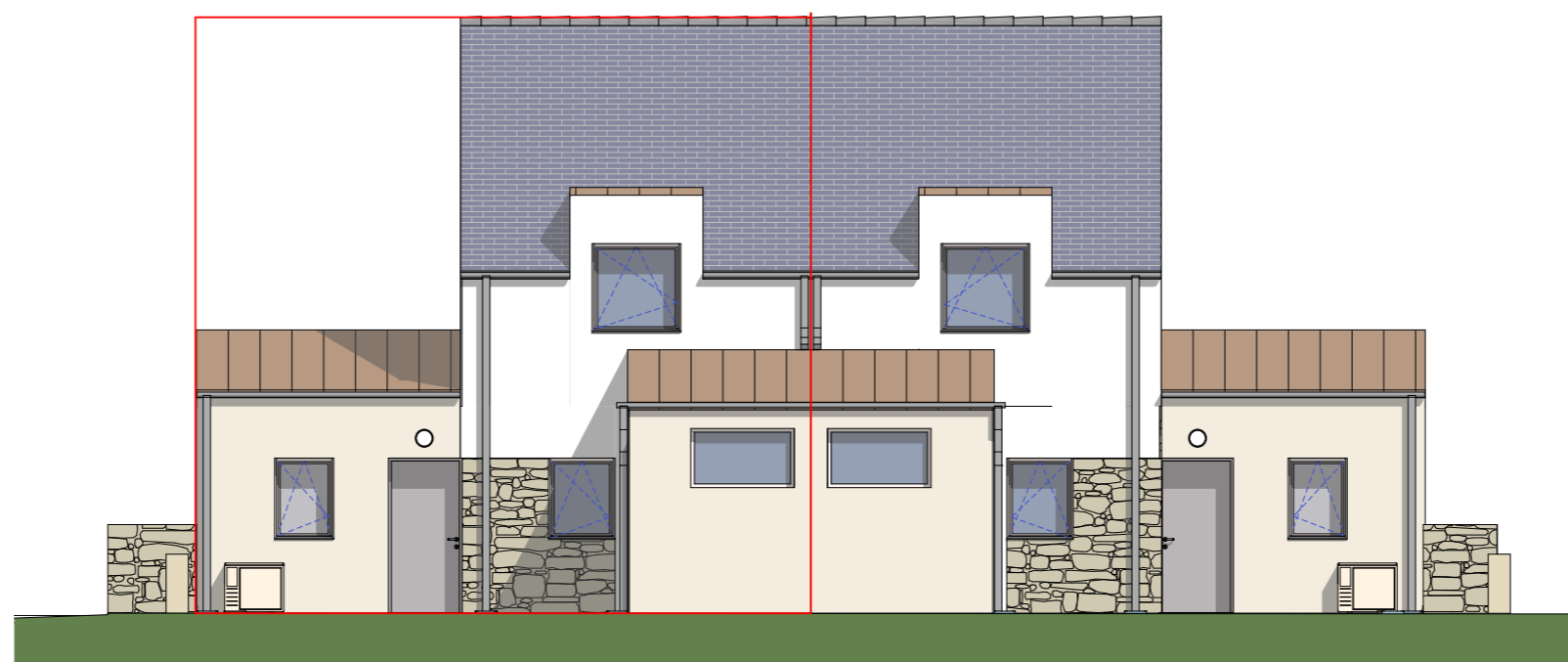
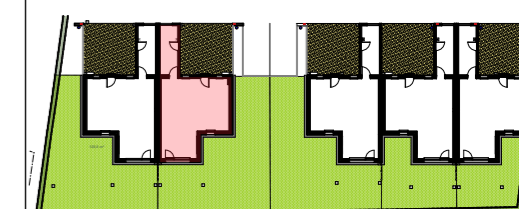
PLANS ETABLIS LE 22/10/2024

**M4**

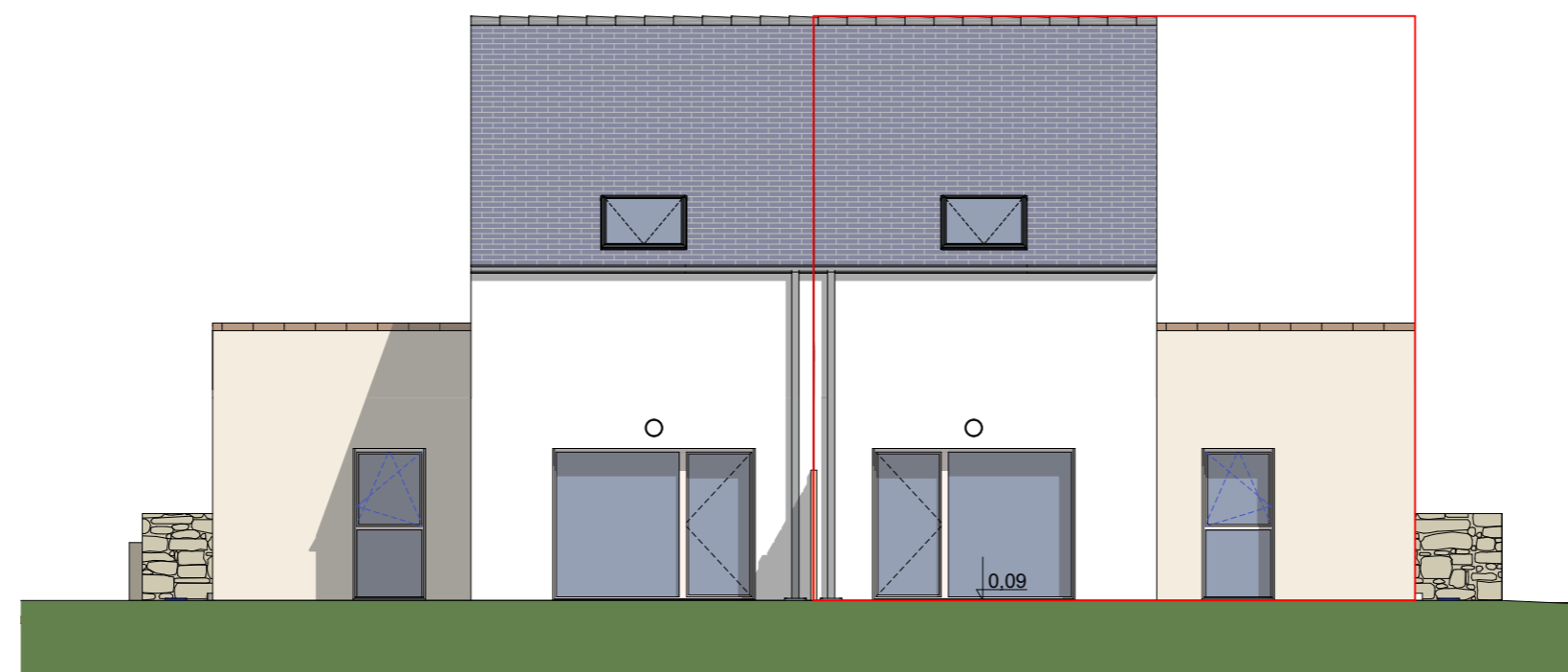
TYPE

T4

Plan de repérage



**ELEVATION NORD**



**ELEVATION SUD**