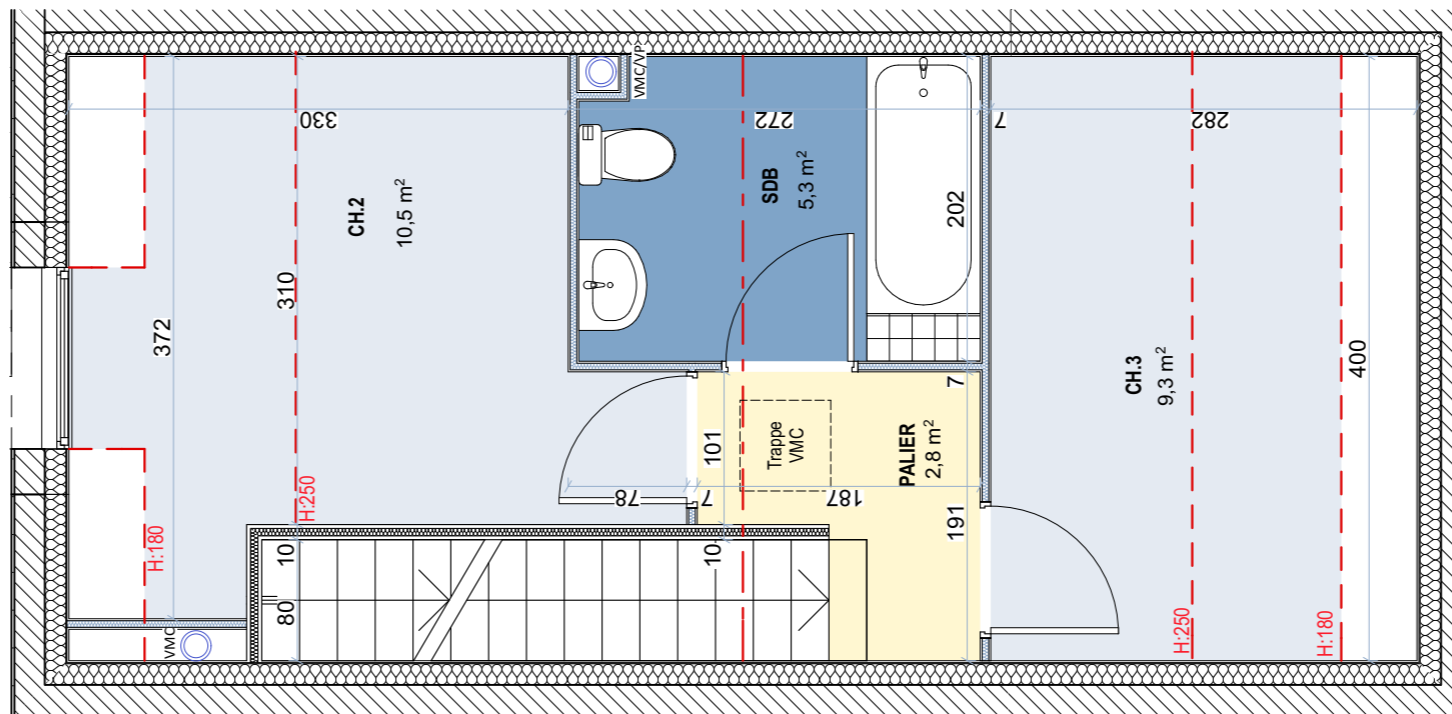
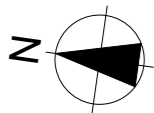
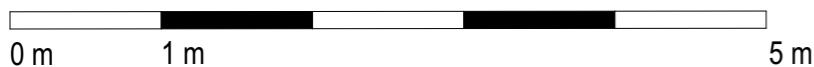
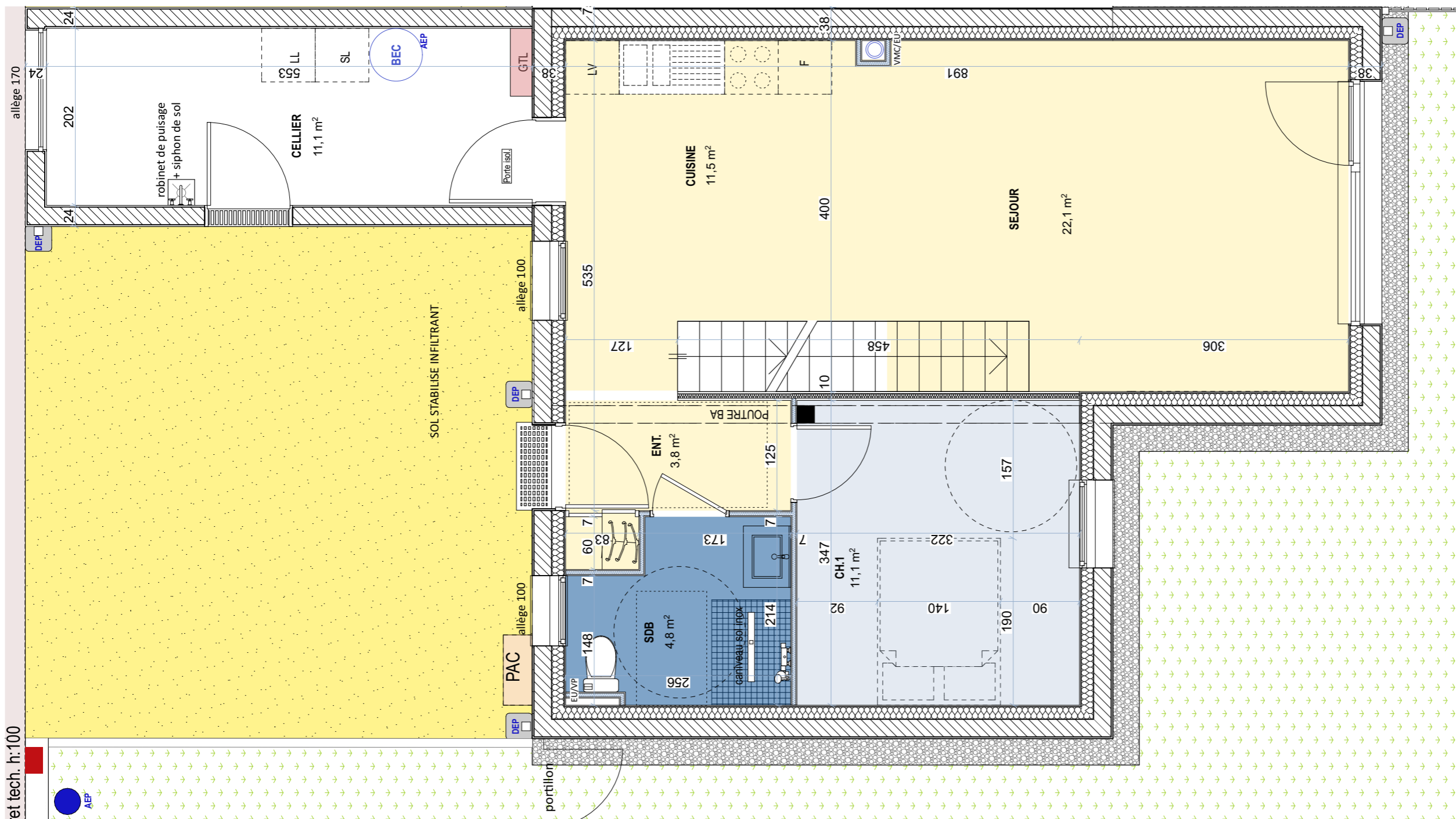


PLANS R+1

Echelle 1/50°



PLANS RDC



LE CARRE DU ROSELIER

Habitats groupés et collectifs
5, rue du Roselier
22440 TREMUSON



PLANS ETABLIS LE 22/10/2024

M3

TYPE **T4**

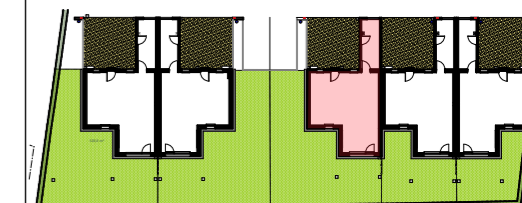
Surfaces Habitables

Entrée	3,80 m ²
Séjour	22,10 m ²
Cuisine	11,50 m ²
Chambre 1	11,10 m ²
Salle d'eau	4,80 m ²
Palier	2,80 m ²
Chambre 2	10,50 m ²
Chambre 3	9,30 m ²
SDB	5,30 m ²
TOTAL	81,30 m²

Surfaces Utiles

Cellier	11,10 m ²
Jardin	122,00 m ²

Plan de repérage





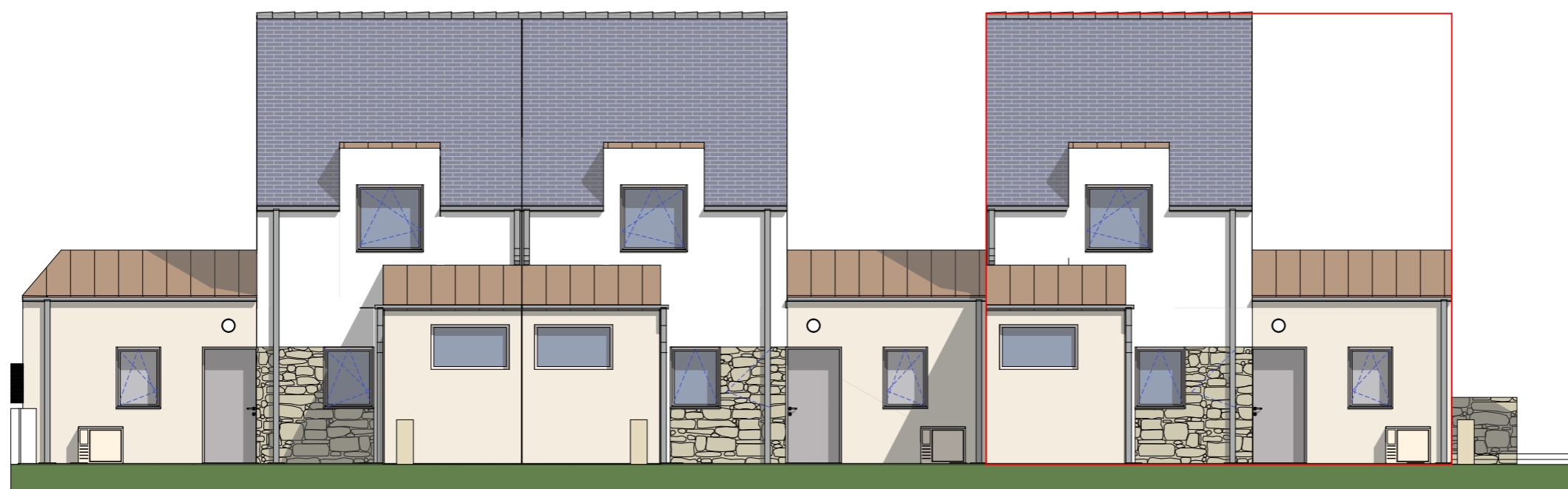
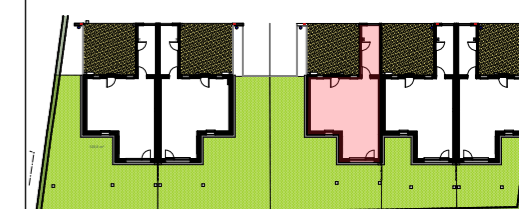
PLANS ETABLIS LE 22/10/2024

M3

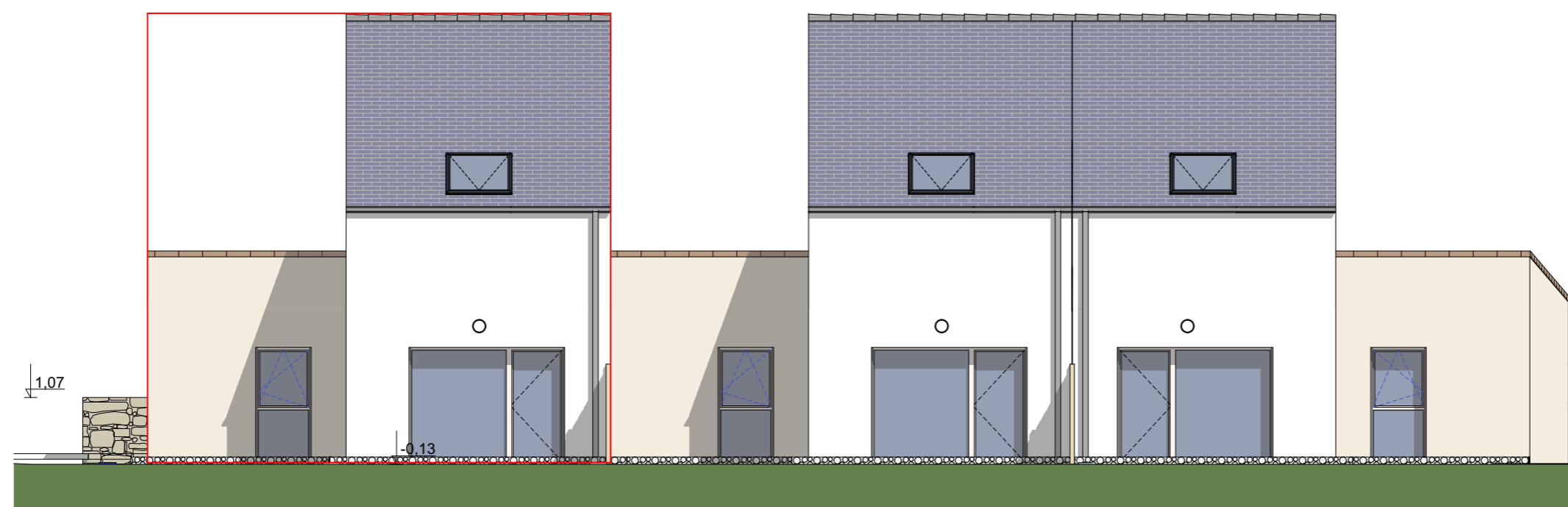
TYPE

T4

Plan de repérage



ELEVATION NORD



ELEVATION SUD