

**LE CARRE DU ROSELIER**

Habitats groupés et collectifs  
5, rue du Roselier  
22440 TREMUSON



PLANS ETABLIS LE 22/10/2024

**B13**

TYPE	<b>T2</b>
------	-----------

NIVEAU R+1

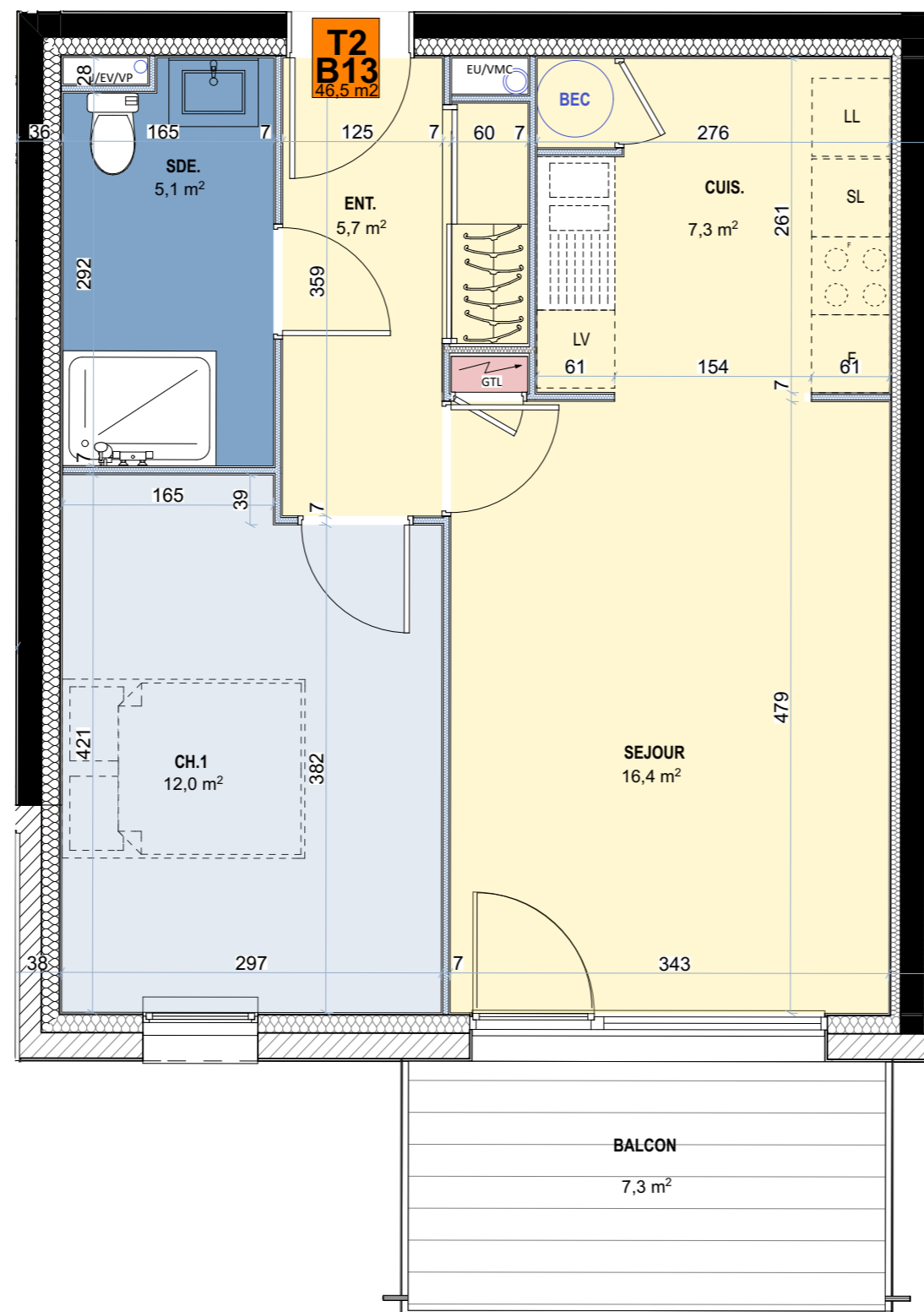
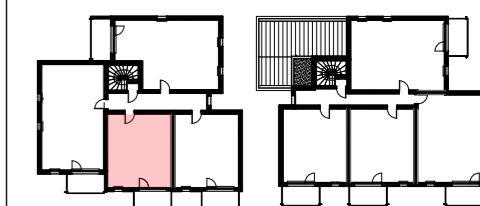
Surfaces Habitables

Entrée	5,70 m <sup>2</sup>
Séjour	16,40 m <sup>2</sup>
Cuisine	7,30 m <sup>2</sup>
Chambre 1	12,00 m <sup>2</sup>
Salle d'eau	5,10 m <sup>2</sup>
<b>TOTAL</b>	<b>46,50 m<sup>2</sup></b>

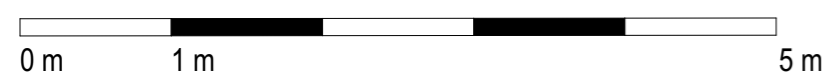
Surfaces Utiles

Balcon	7,30 m <sup>2</sup>
--------	---------------------

Plan de repérage



Echelle 1/50<sup>e</sup>



**LE CARRE DU ROSELIER**

Habitats groupés et collectifs  
5, rue du Roselier  
22440 TREMUSON



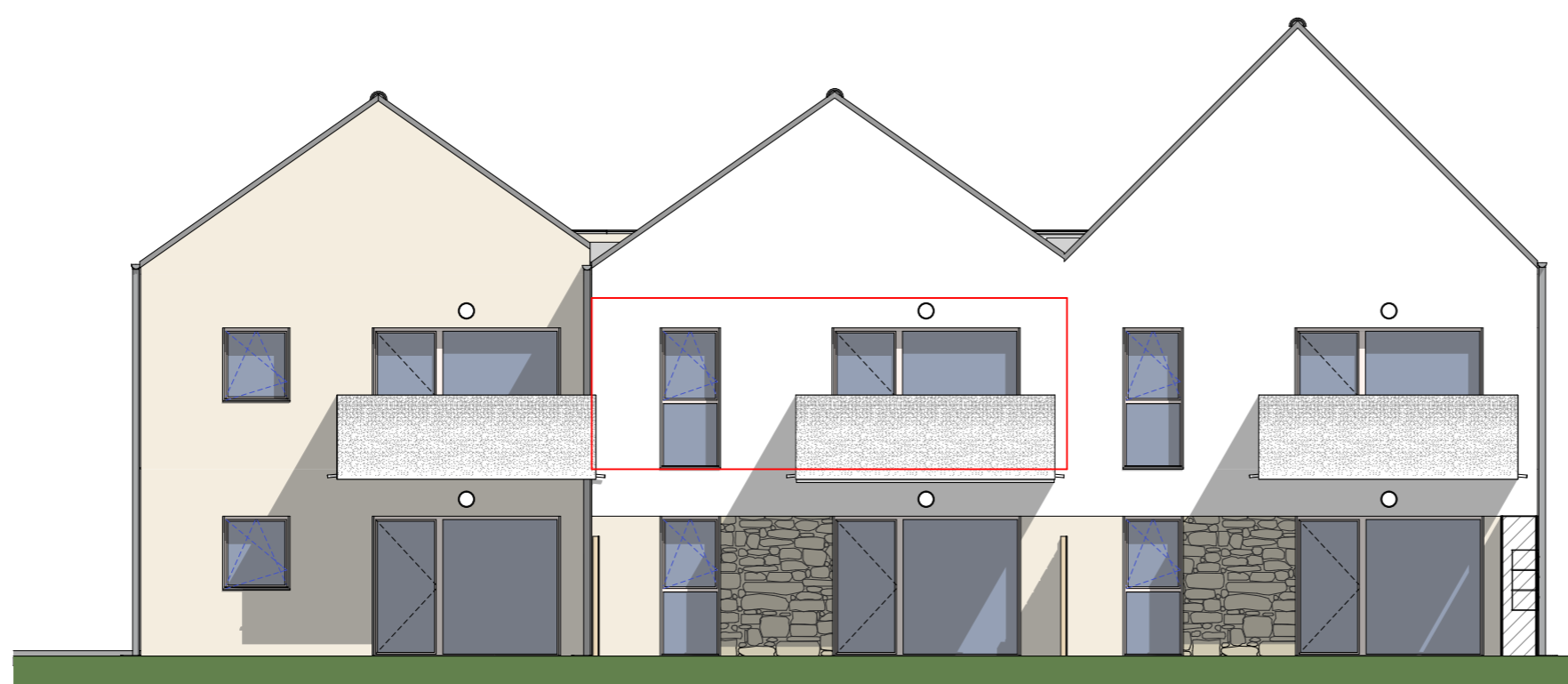
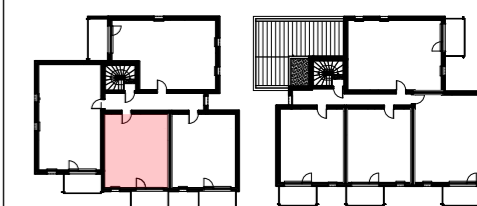
PLANS ETABLIS LE 22/10/2024

**B13**

TYPE

T2

Plan de repérage



ELEVATION SUD