

LE CARRE DU ROSELIER

Habitats groupés et collectifs
5, rue du Roselier
22440 TREMUSON



PLANS ETABLIS LE 22/10/2024

B04

TYPE **T3**

NIVEAU RDC

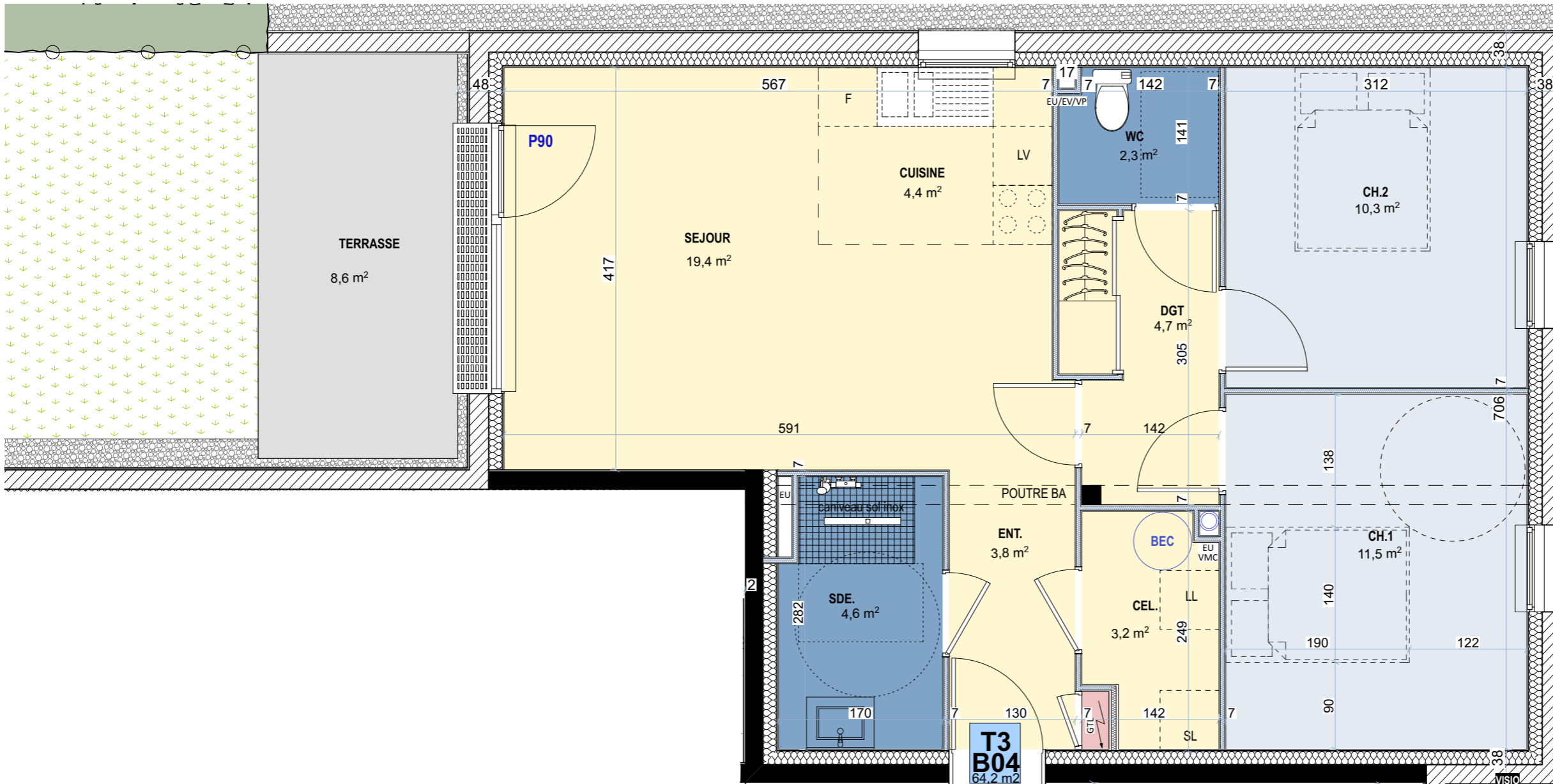
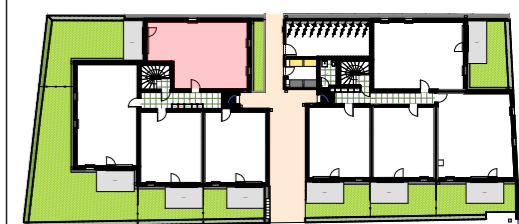
Surfaces Habitables

Entrée	3,80 m ²
Séjour	19,40 m ²
Cuisine	4,40 m ²
DGT	4,70 m ²
WC	2,30 m ²
Chambre 1	11,50 m ²
Chambre 2	10,30 m ²
Salle d'eau	4,60 m ²
Cellier	3,20 m ²
TOTAL	64,20 m²

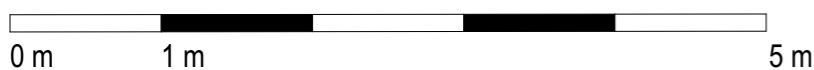
Surfaces Utiles

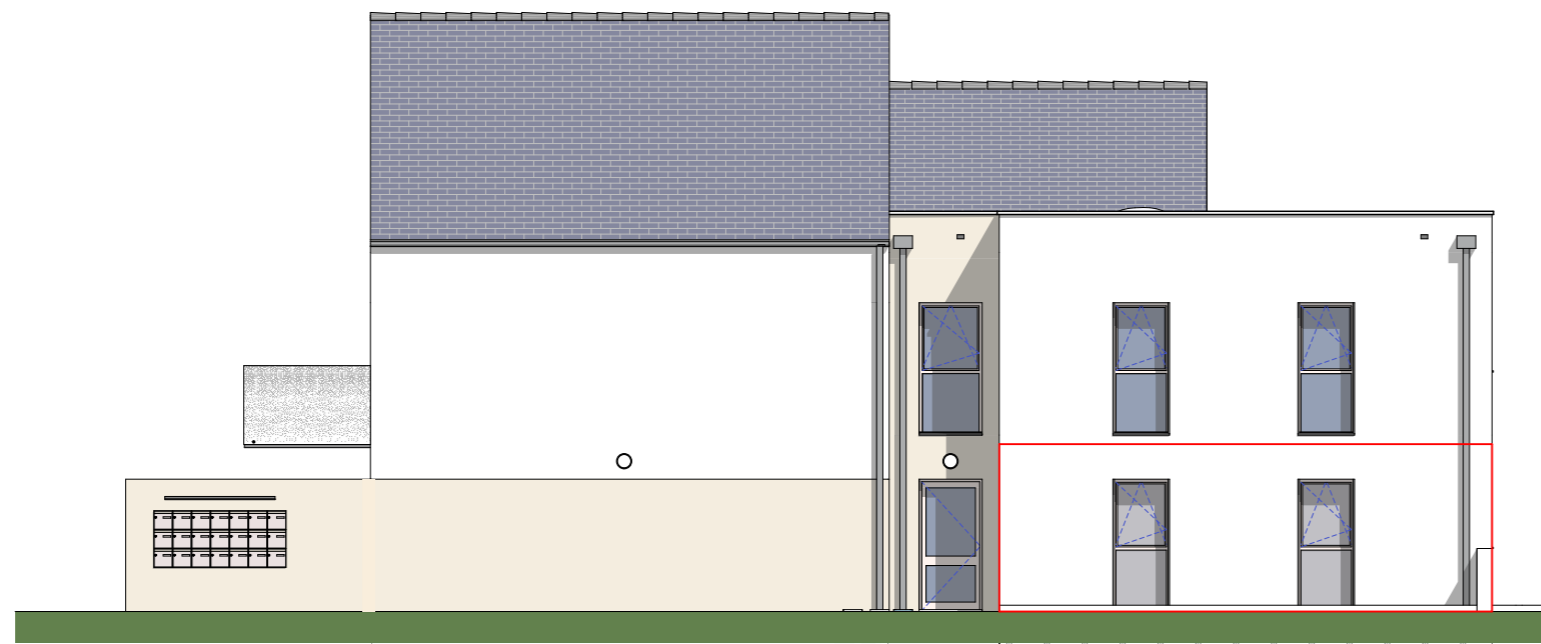
Jardin avec terrasse	54,00 m ²
----------------------	----------------------

Plan de repérage

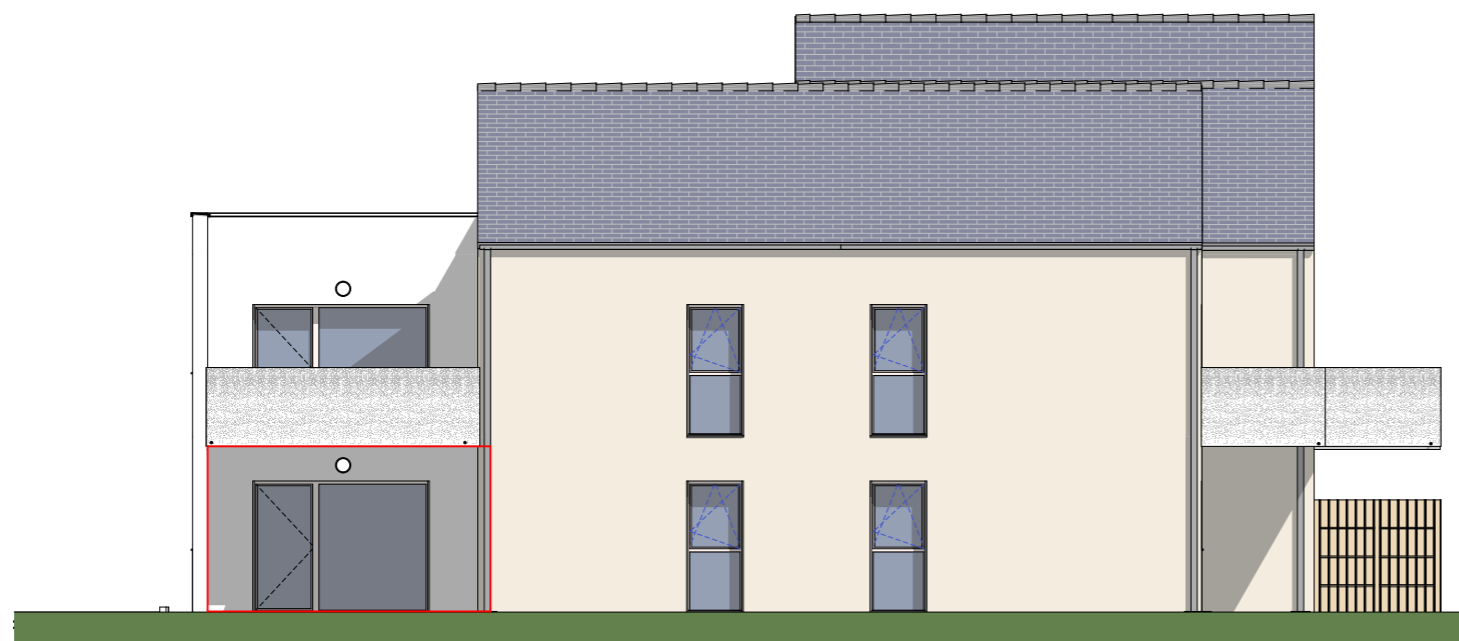


Echelle 1/50^e

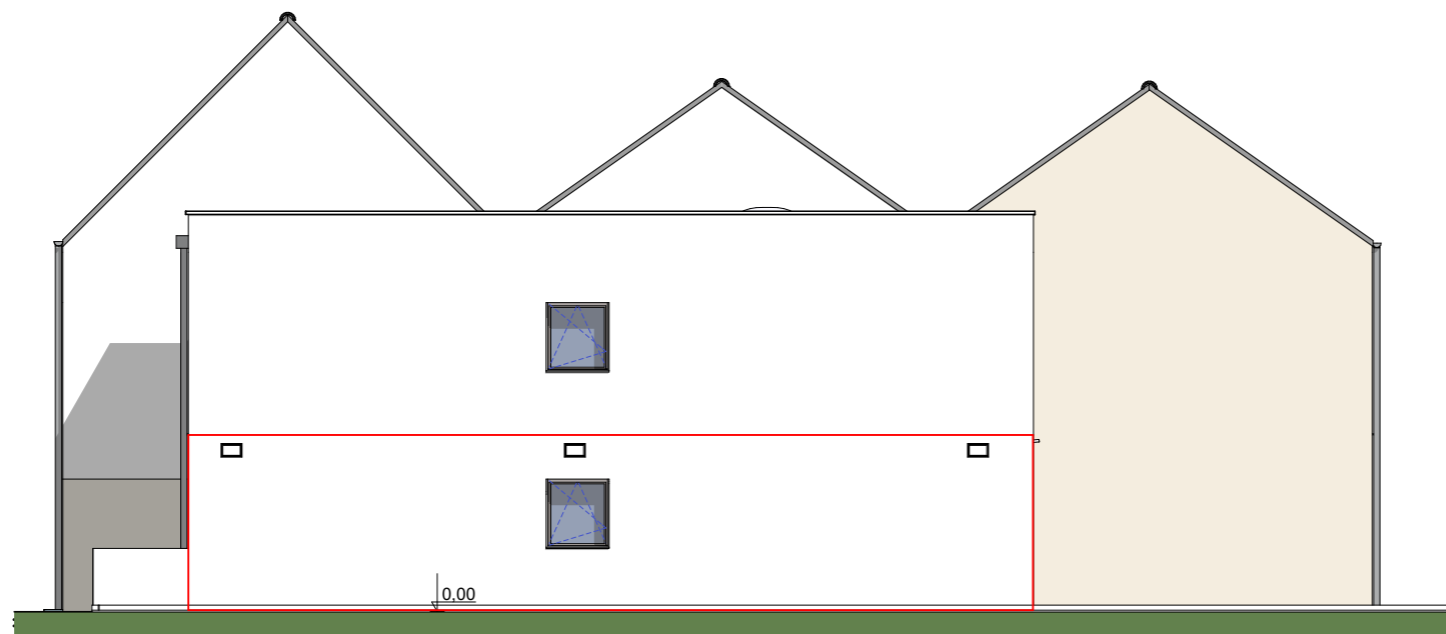




ELEVATION EST BATIMENT B



ELEVATION OUEST BATIMENT B



ELEVATION NORD BATIMENT B

LE CARRE DU ROSELIER

Habitats groupés et collectifs
5, rue du Roselier
22440 TREMUSON



PLANS ETABLIS LE 22/10/2024

B04

TYPE

T3

Plan de repérage

