

LE CARRE DU ROSELIER
Habitats groupés et collectifs
5, rue du Roselier
22440 TREMUSON



PLANS ETABLIS LE 22/10/2024

A11

TYPE **T3**

NIVEAU R+1

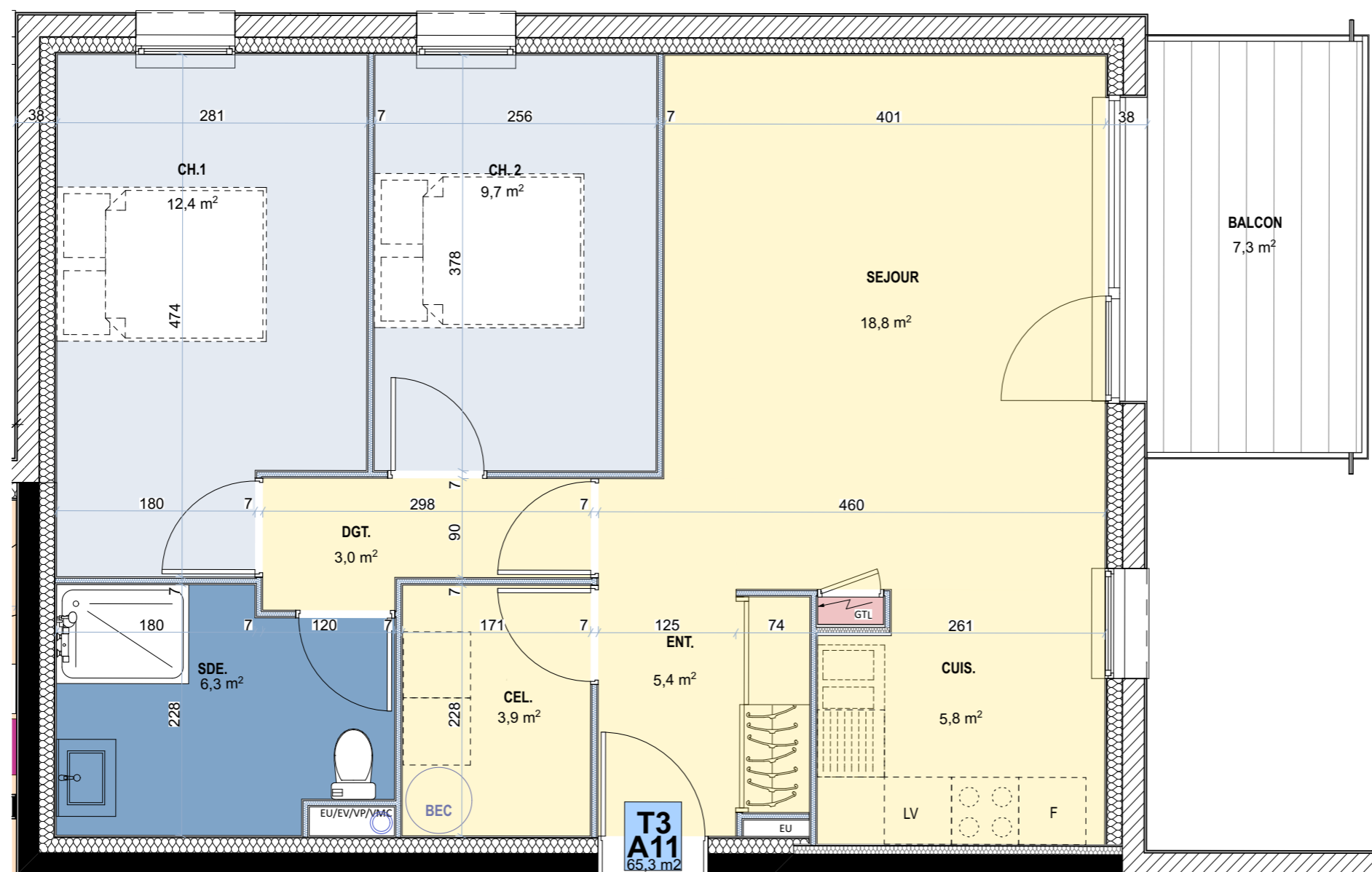
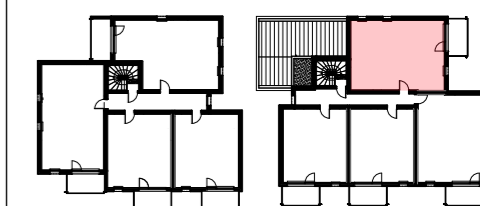
Surfaces Habitables

Entrée	5,40 m ²
Séjour	18,80 m ²
Cuisine	5,80 m ²
Chambre 1	12,40 m ²
Chambre 2	9,70 m ²
Salle d'eau	6,30 m ²
Cellier	3,90 m ²
DGT	3,00 m ²
TOTAL	65,30 m²

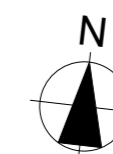
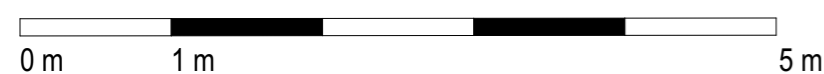
Surfaces Utiles

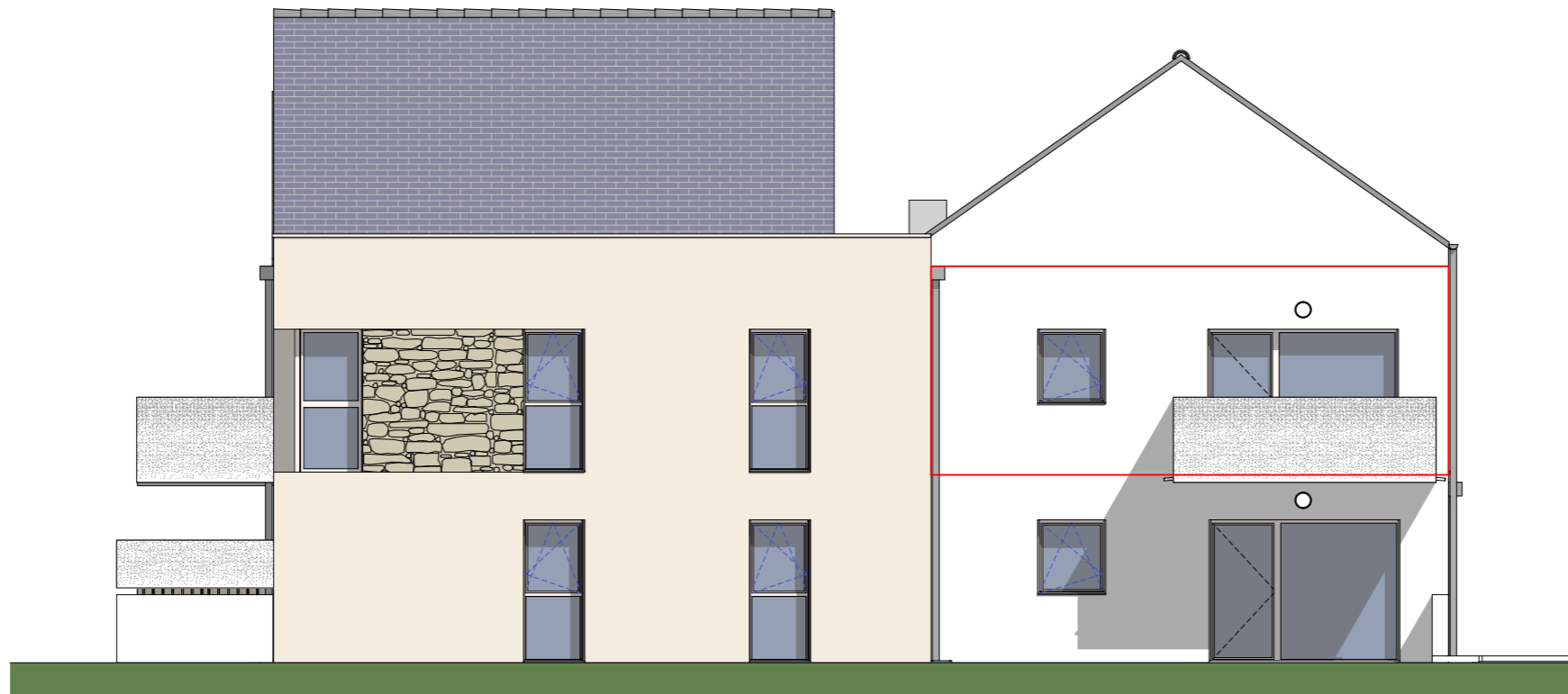
Balcon	7,30 m ²
--------	---------------------

Plan de repérage

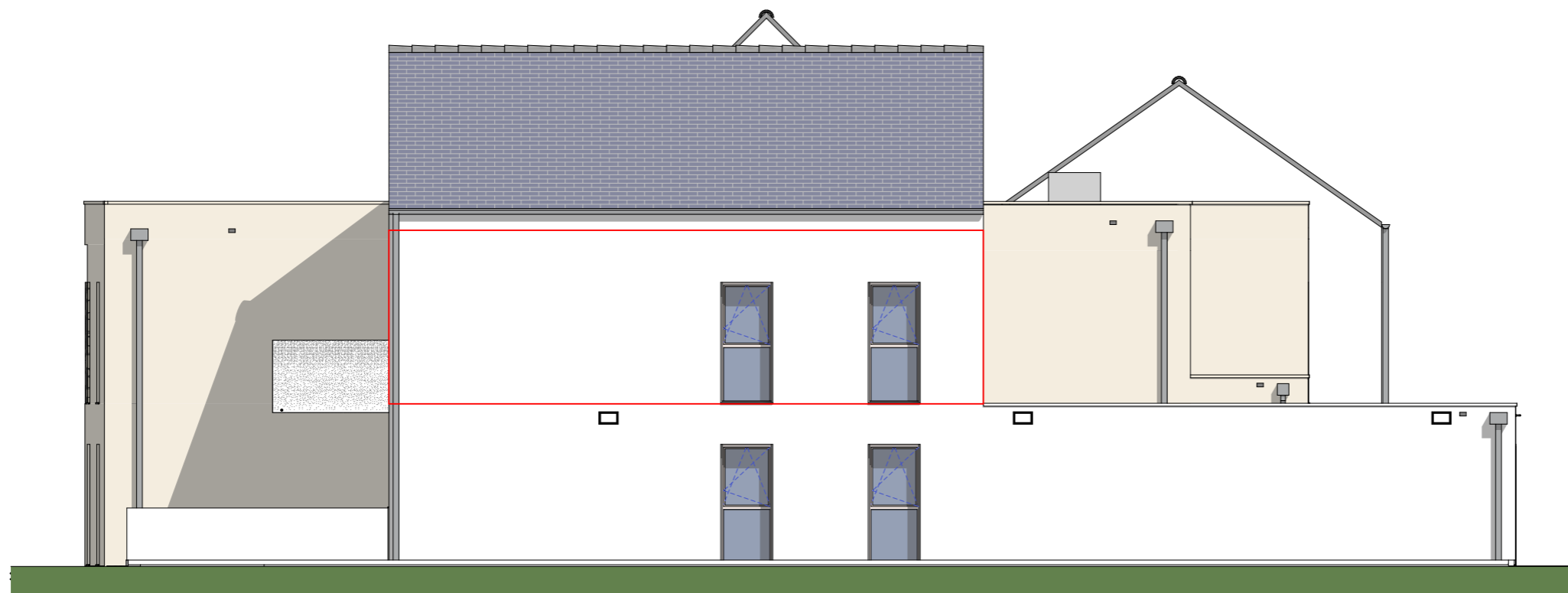


Echelle 1/50^e





ELEVATION EST BATIMENT A



ELEVATION NORD BATIMENT A



coopalis

L'habitat qui vous ressemble

LAAB
architectes

2, rue de Crec'h Tanet
22 300 Lannion
Tél: 02 96 37 18 31
contact@laab.bzh

LE CARRE DU ROSELIER

Habitats groupés et collectifs

5, rue du Roselier

22440 TREMUSON



PLANS ETABLIS LE 22/10/2024

A11

TYPE

T3

Plan de repérage

