



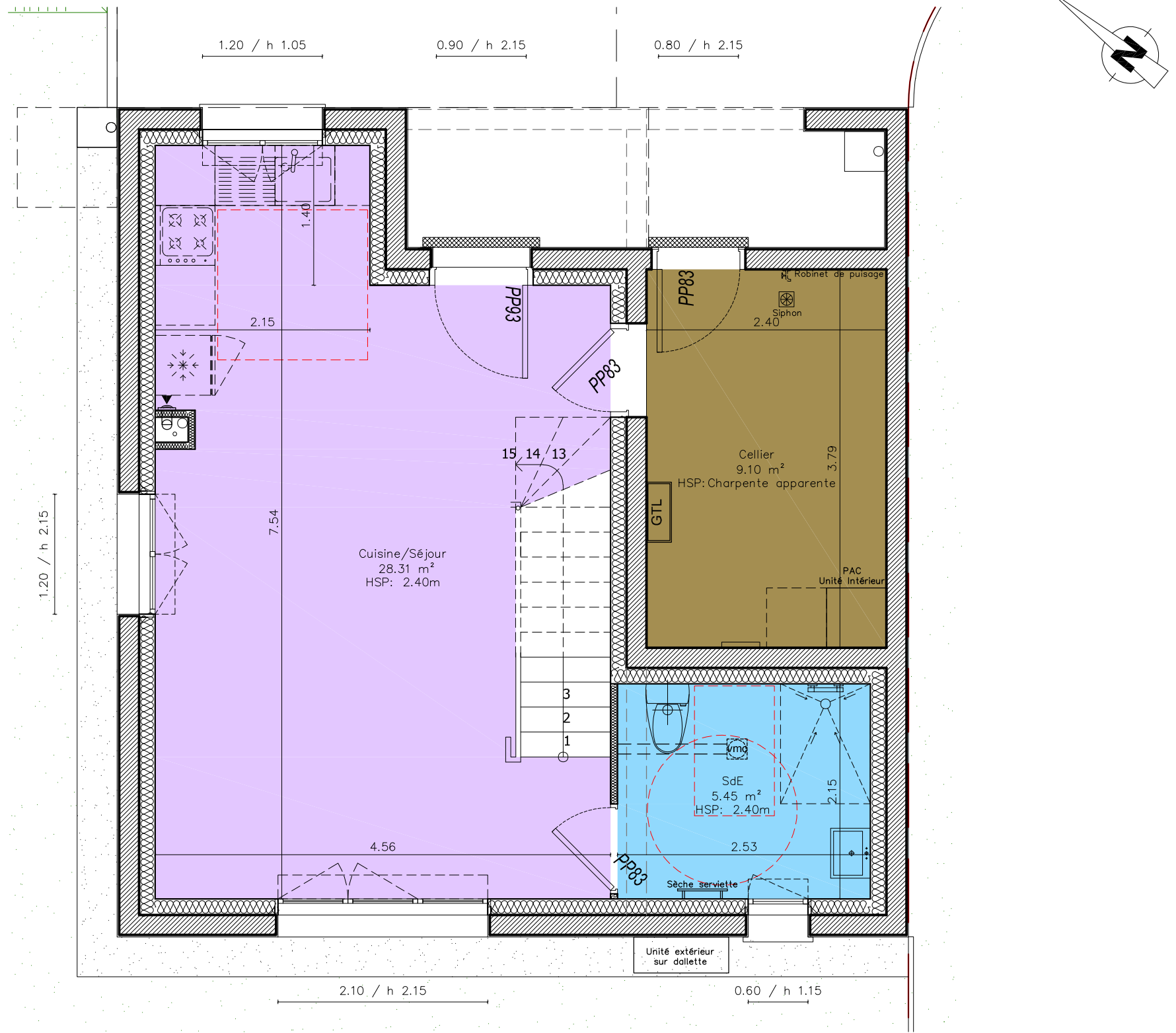
E.I. Xavier GROSS-QUELEN
 ARCHITECTE DPLG
 22000 SAINT BRIEUC
 Tél : 02.96.61.06.86
 @ : gross-quelen.archi@orange.fr

Construction de 5 logements
 PSLA (3 logts Type 4 et 2 logts
 type T3)

Chemin des Lavandieres
 22700 SAINT-QUAY-PERROS

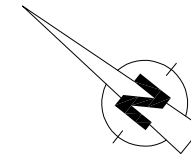
Logement Type 3
 Lot 5 - Terrain: 252 m²

Ech: 1/50



| TABLEAU DE SURFACE | |
|--------------------|----------------------|
| RDC | |
| | SURFACES HABITABLES |
| Cuisine/Séjour | 28.31 m ² |
| SdE | 5.45 m ² |
| TOTAL | 33.76 m ² |
| Etage | |
| Palier | 2.30 m ² |
| SdE | 4.65 m ² |
| Chambre 1 | 12.08 m ² |
| Chambre 2 | 11.37 m ² |
| TOTAL ETAGE | 30.40 m ² |
| TOTAL RDC+Etage | 64.16 m ² |

| TABLEAU DE SURFACE (ANNEXES) | |
|------------------------------|---------------------|
| Cellier | 9.10 m ² |



E.I. Xavier GROSS-QUELEN
 ARCHITECTE DPLG
 22000 SAINT BRIEUC
 Tél : 02.96.61.06.86
 @ : gross-quelen.archi@orange.fr

Construction de 5 logements
 PSLA (3 logts Type 4 et 2 logts
 type T3)

Chemin des Lavandieres
 22700 SAINT-QUAY-PERROS

Logement Type 3
 Lot 5 - Terrain: 252 m²

Ech: 1/50

| TABLEAU DE SURFACE | |
|------------------------|----------------------------|
| RDC | |
| | SURFACES HABITABLES |
| Cuisine/Séjour | 28.31 m ² |
| SdE | 5.45 m ² |
| TOTAL | 33.76 m² |
| Etage | |
| Palier | 2.30 m ² |
| SdE | 4.65 m ² |
| Chambre 1 | 12.08 m ² |
| Chambre 2 | 11.37 m ² |
| TOTAL ETAGE | 30.40 m² |
| TOTAL RDC+Etage | 64.16 m² |

| TABLEAU DE SURFACE (ANNEXES) | |
|------------------------------|---------------------|
| Cellier | 9.10 m ² |

