

**LES TERRASSES DE  
KERGUEN**

Lotissement communal  
22700 LOUANNEC  
22 logements collectifs



PLANS ETABLIS LE 16/09/2024

**B12**

TYPE **T3**

NIVEAU R+1

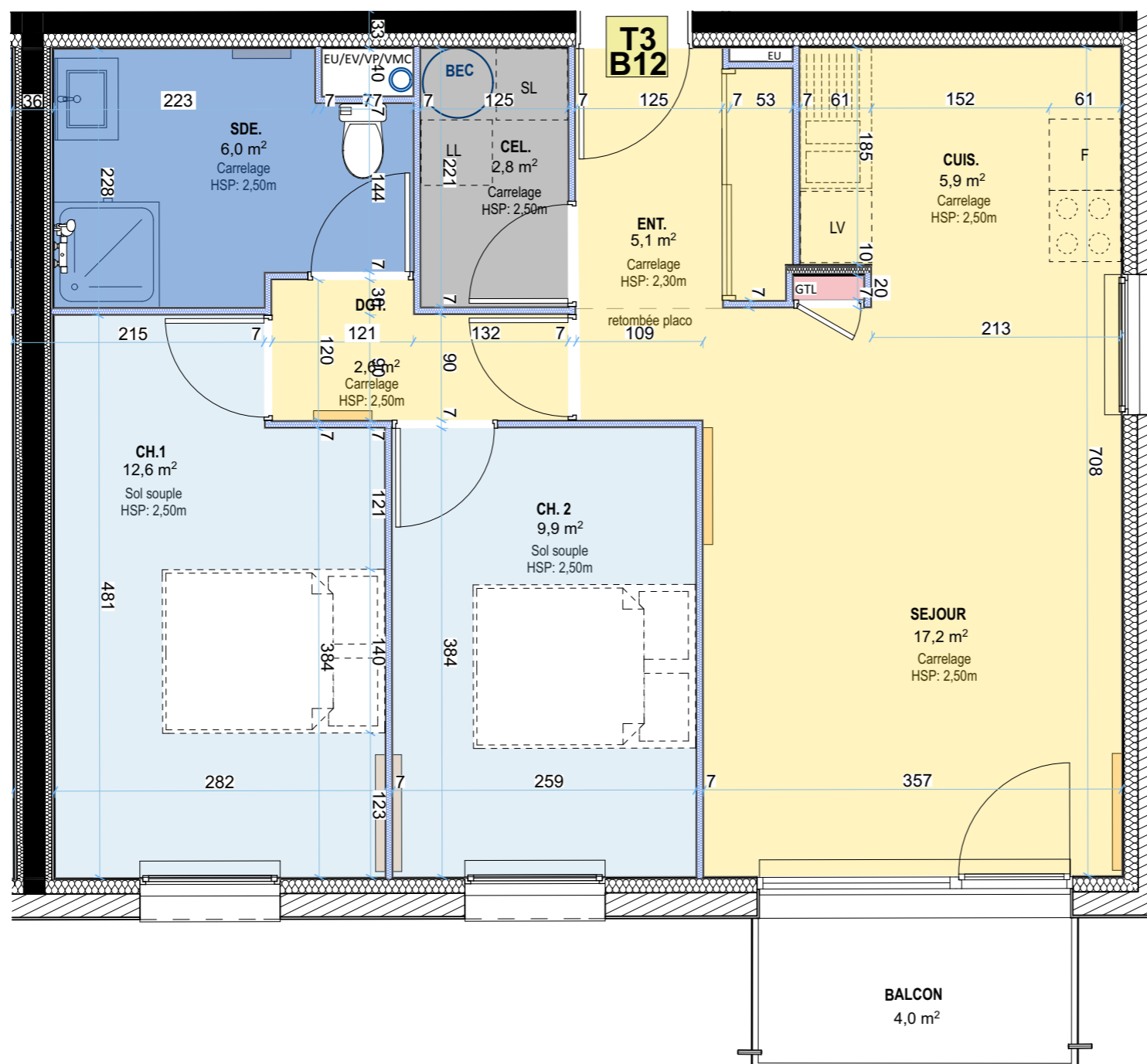
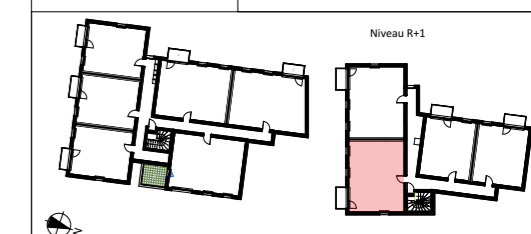
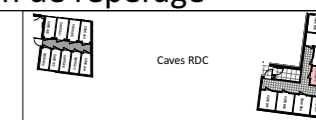
Surfaces Habitables

Entrée	5,10 m <sup>2</sup>
Séjour	17,20 m <sup>2</sup>
Cuisine	5,90 m <sup>2</sup>
Chambre 1	12,60 m <sup>2</sup>
Chambre 2	9,90 m <sup>2</sup>
Salle d'eau	6,00 m <sup>2</sup>
Dégagement	2,60 m <sup>2</sup>
Cellier	2,80 m <sup>2</sup>
<b>TOTAL</b>	<b>62,10 m<sup>2</sup></b>

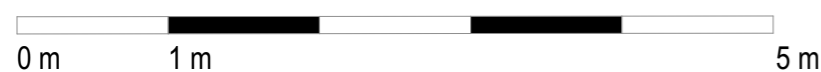
Surfaces Utiles

Cave	4,80 m <sup>2</sup>
Balcon	4,00 m <sup>2</sup>

Plan de repérage



Echelle 1/50<sup>e</sup>



**LES TERRASSES DE  
KERGUEN**

Lotissement communal  
22700 LOUANNEC  
22 logements collectifs



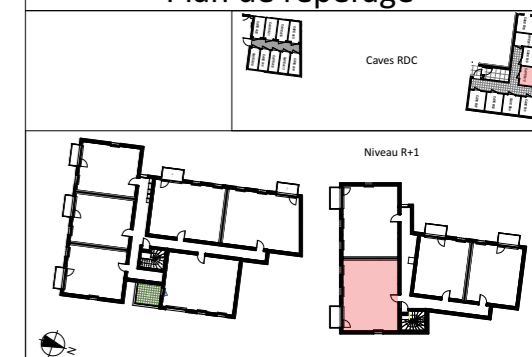
PLANS ETABLIS LE 16/09/2024

**B12**

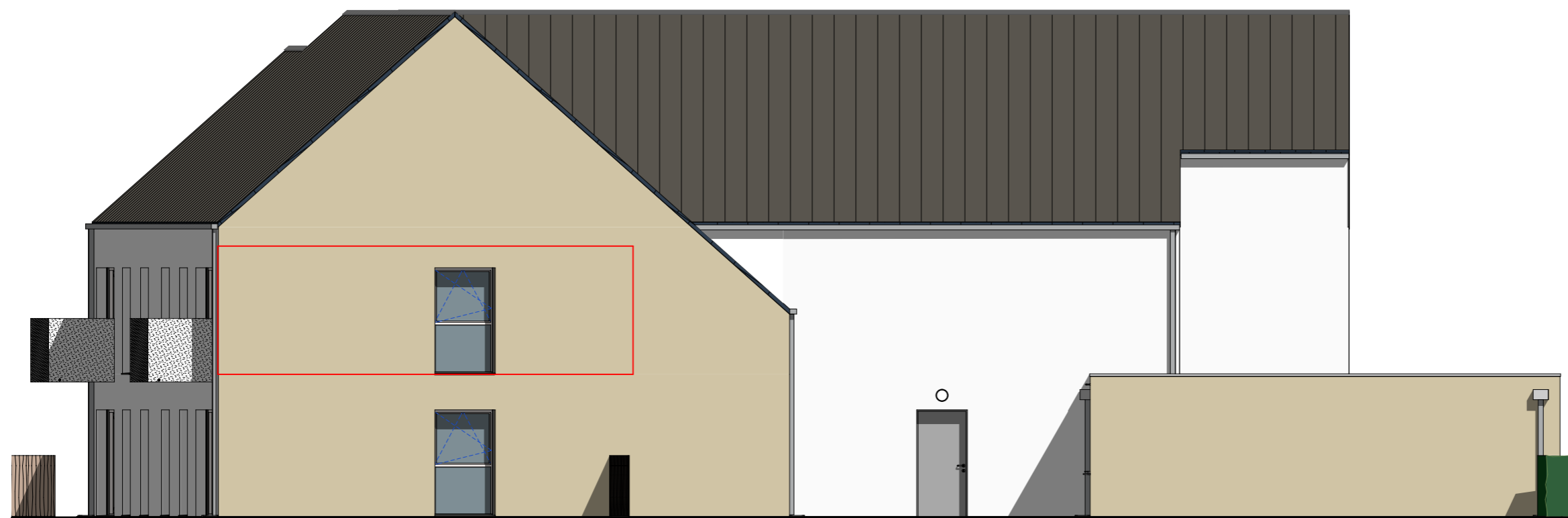
TYPE	<b>T3</b>
------	-----------

NIVEAU R+1

Plan de repérage



ELEVATION SUD



ELEVATION EST