

**LES TERRASSES DE
KERGUEN**

Lotissement communal
22700 LOUANNEC
22 logements collectifs



PLANS ETABLIS LE 16/09/2024

B11

TYPE **T3**

NIVEAU R+1

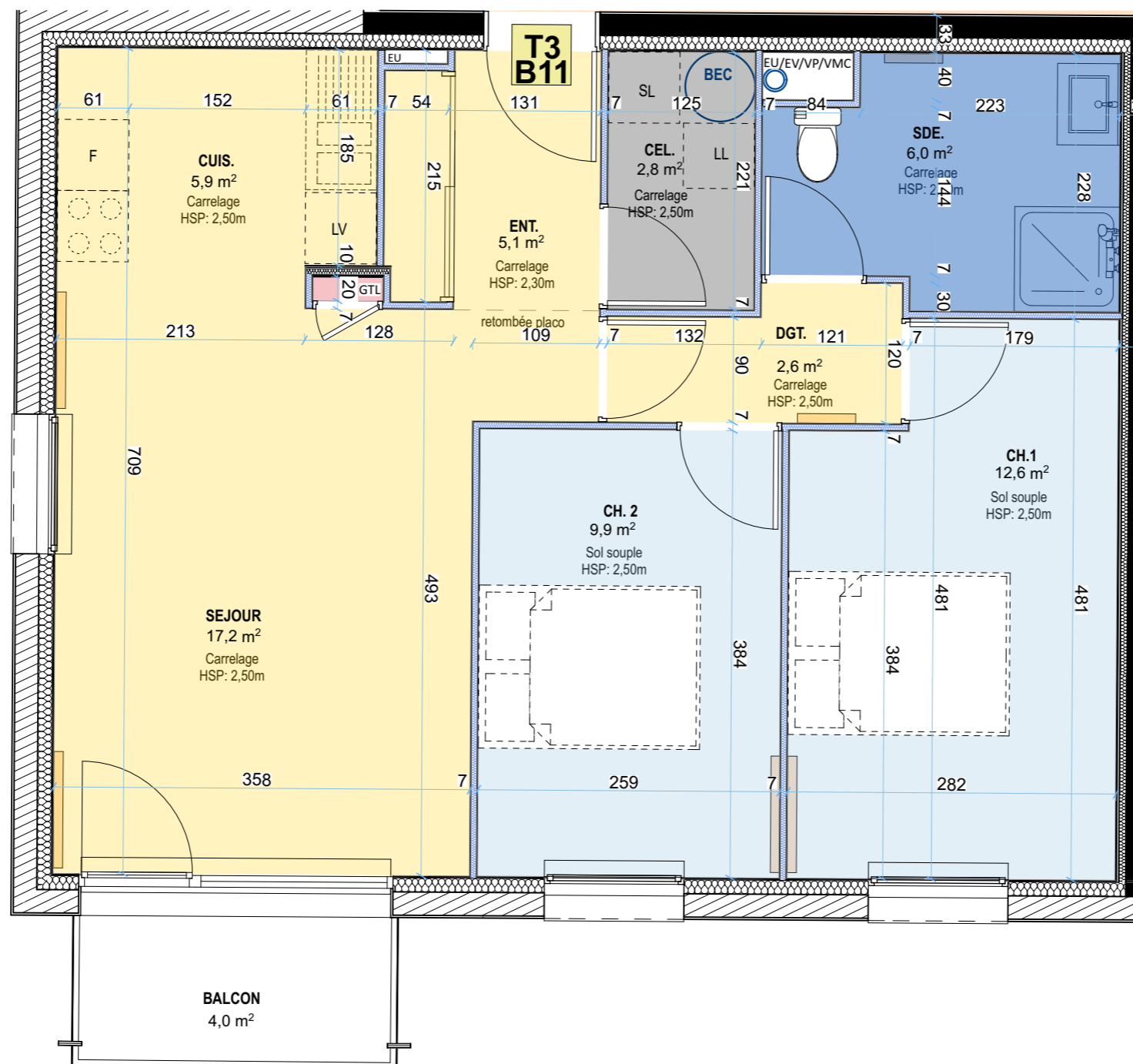
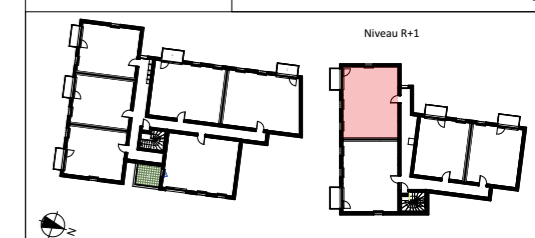
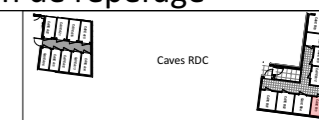
Surfaces Habitables

Entrée	5,10 m ²
Séjour	17,20 m ²
Cuisine	5,90 m ²
Chambre 1	12,60 m ²
Chambre 2	9,90 m ²
Salle d'eau	6,00 m ²
Dégagement	2,60 m ²
Cellier	2,80 m ²
TOTAL	62,10 m²

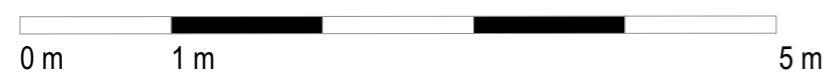
Surfaces Utiles

Cave	4,80 m ²
Balcon	4,00 m ²

Plan de repérage



Echelle 1/50^e



**LES TERRASSES DE
KERGUEN**

Lotissement communal
22700 LOUANNEC
22 logements collectifs



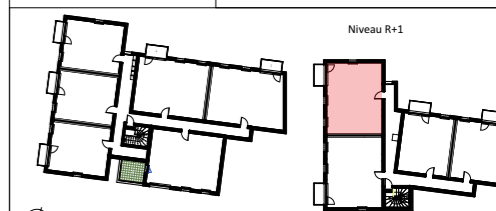
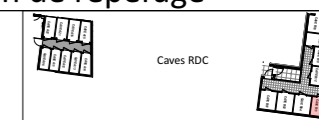
PLANS ETABLIS LE 16/09/2024

B11

TYPE	T3
------	-----------

NIVEAU R+1

Plan de repérage



ELEVATION SUD



ELEVATION OUEST