

**LES TERRASSES DE
KERGUEN**

Lotissement communal
22700 LOUANNEC
22 logements collectifs



PLANS ETABLIS LE 16/09/2024

A14

TYPE	T3
------	-----------

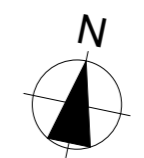
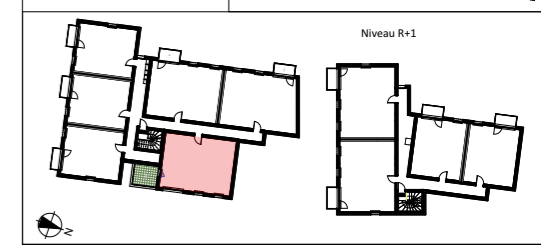
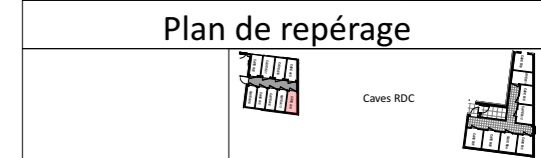
NIVEAU R+1

Surfaces Habitables

Entrée	5,10 m ²
Séjour	17,20 m ²
Cuisine	5,80 m ²
Chambre 1	12,50 m ²
Chambre 2	9,90 m ²
Salle d'eau	5,90 m ²
Dégagement	2,60 m ²
Cellier	2,70 m ²
TOTAL	61,70 m²

Surfaces Utiles

Cave	3,50 m ²
Terrasse	8,80 m ²



**LES TERRASSES DE
KERGUEN**

Lotissement communal
22700 LOUANNEC
22 logements collectifs



PLANS ETABLIS LE 16/09/2024

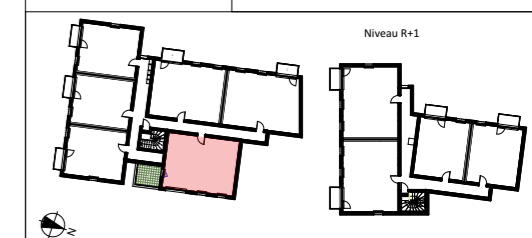
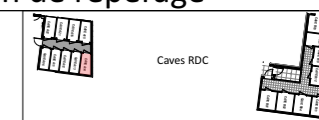
A14

TYPE

T3

NIVEAU R+1

Plan de repérage



ELEVATION EST