

**LES TERRASSES DE  
KERGUEN**

Lotissement communal  
22700 LOUANNEC  
22 logements collectifs



PLANS ETABLIS LE 16/09/2024

**B14**

TYPE **T2**

NIVEAU R+1

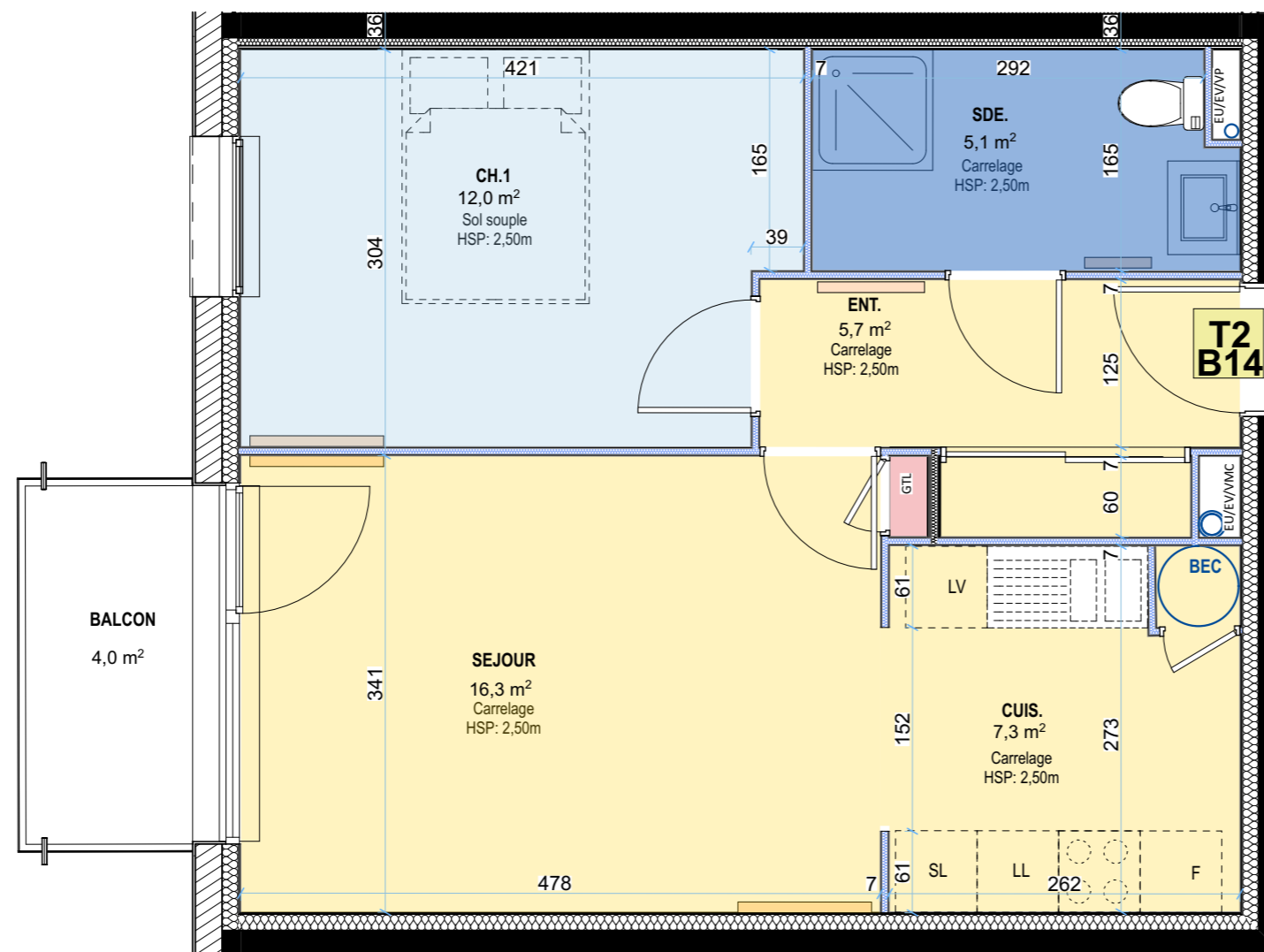
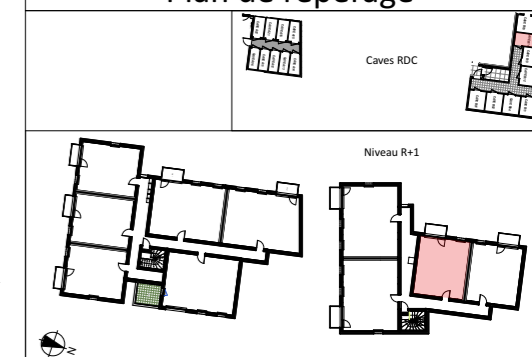
Surfaces Habitables

Entrée	5,70 m <sup>2</sup>
Séjour	16,30 m <sup>2</sup>
Cuisine	7,30 m <sup>2</sup>
Chambre 1	12,00 m <sup>2</sup>
Salle d'eau	5,10 m <sup>2</sup>
<b>TOTAL</b>	<b>46,40 m<sup>2</sup></b>

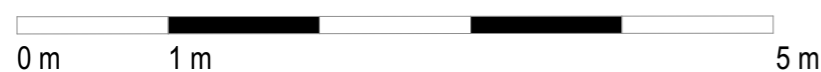
Surfaces Utiles

Cave	4,30 m <sup>2</sup>
Balcon	4,00 m <sup>2</sup>

Plan de repérage



Echelle 1/50<sup>e</sup>



**LES TERRASSES DE  
KERGUEN**

Lotissement communal  
22700 LOUANNEC  
22 logements collectifs



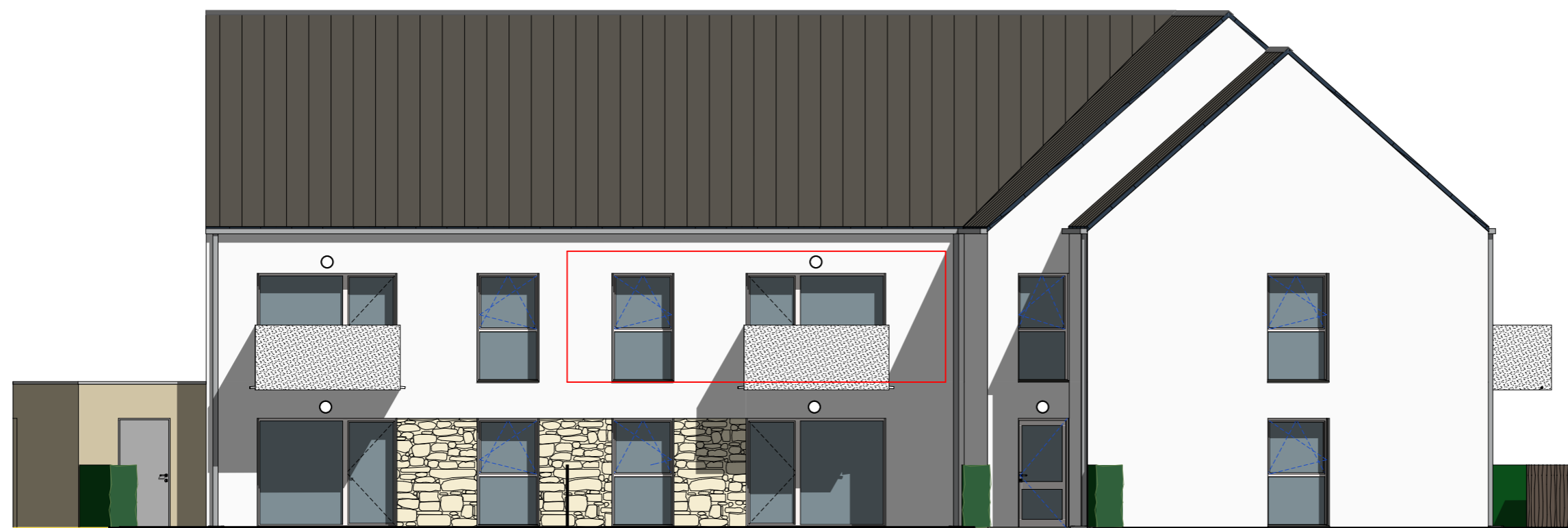
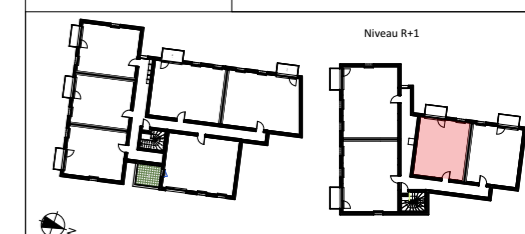
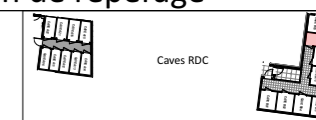
PLANS ETABLIS LE 16/09/2024

**B14**

TYPE	T2
------	----

NIVEAU R+1

Plan de repérage



ELEVATION OUEST