

**LES TERRASSES DE
KERGUEN**

Lotissement communal
22700 LOUANNEC
22 logements collectifs



PLANS ETABLIS LE 16/09/2024

A21

TYPE **T2**

NIVEAU R+2

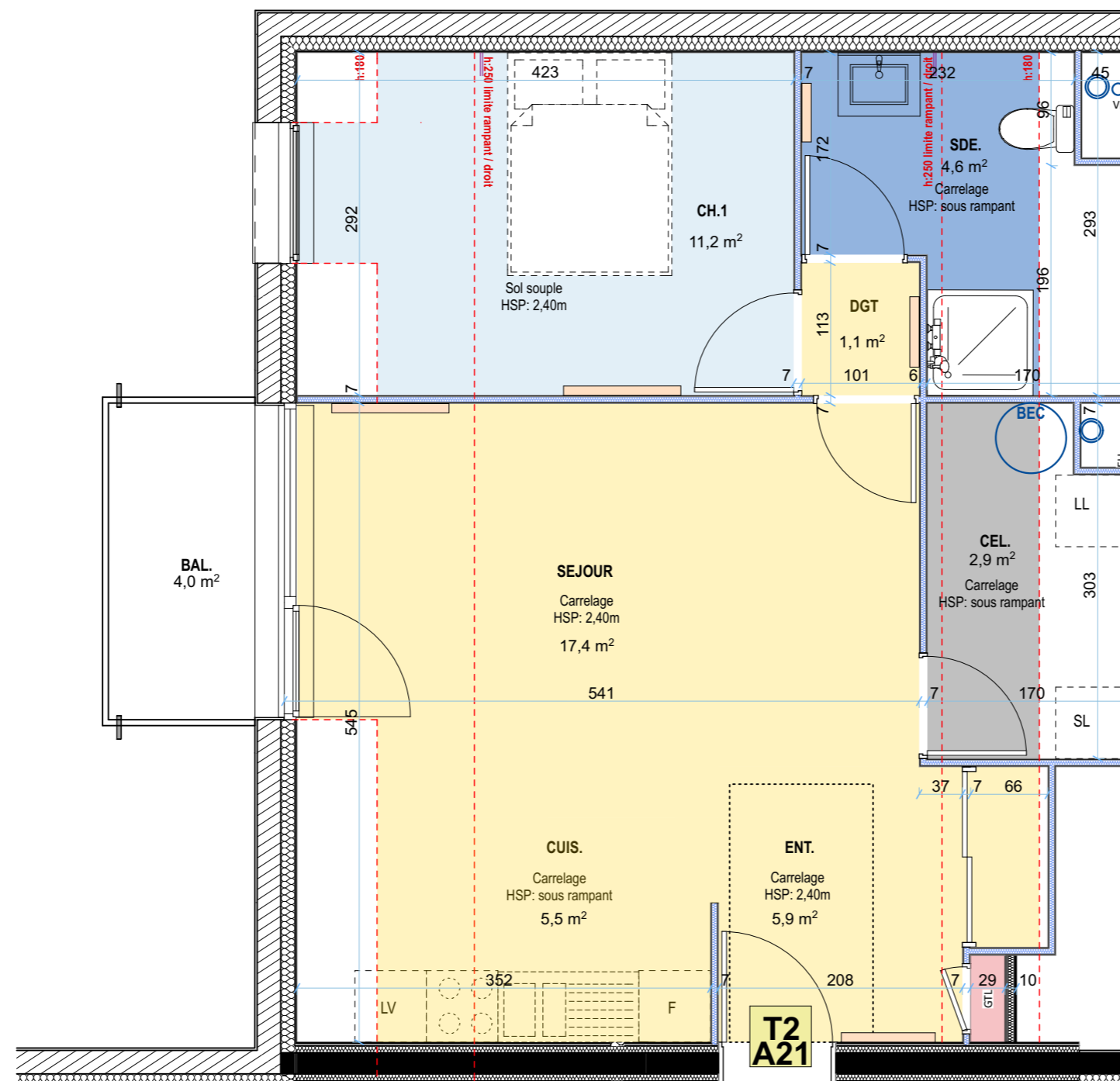
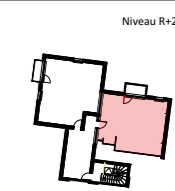
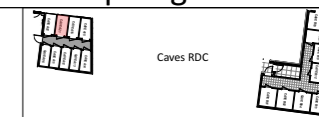
Surfaces Habitables

Entrée	5,90 m ²
Séjour	17,40 m ²
Cuisine	5,50 m ²
Chambre 1	11,20 m ²
Salle d'eau	4,60 m ²
Cellier	2,90 m ²
Dégagement	1,10 m ²
TOTAL	48,60 m²

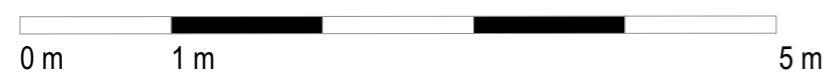
Surfaces Utiles

Cave	3,90 m ²
Balcon	4,00 m ²

Plan de repérage



Echelle 1/50^e



**LES TERRASSES DE
KERGUEN**

Lotissement communal
22700 LOUANNEC
22 logements collectifs



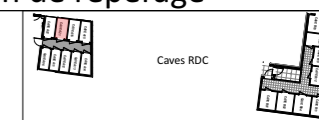
PLANS ETABLIS LE 16/09/2024

A21

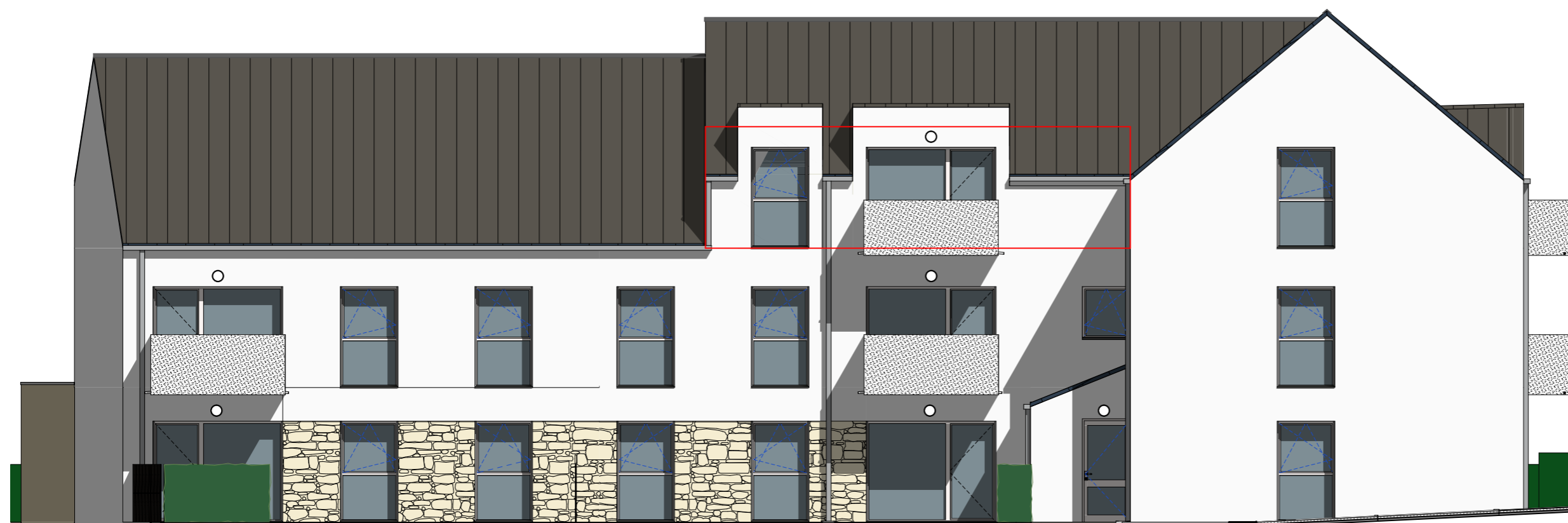
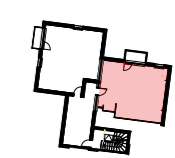
TYPE	T2
------	----

NIVEAU R+2

Plan de repérage



Niveau R+1



ELEVATION OUEST