

LES TERRASSES DE KERGUEN

Lotissement communal
22700 LOUANNEC
22 logements collectifs



PLANS ETABLIS LE 16/09/2024

A11

TYPE	T2
------	----

NIVEAU R+1

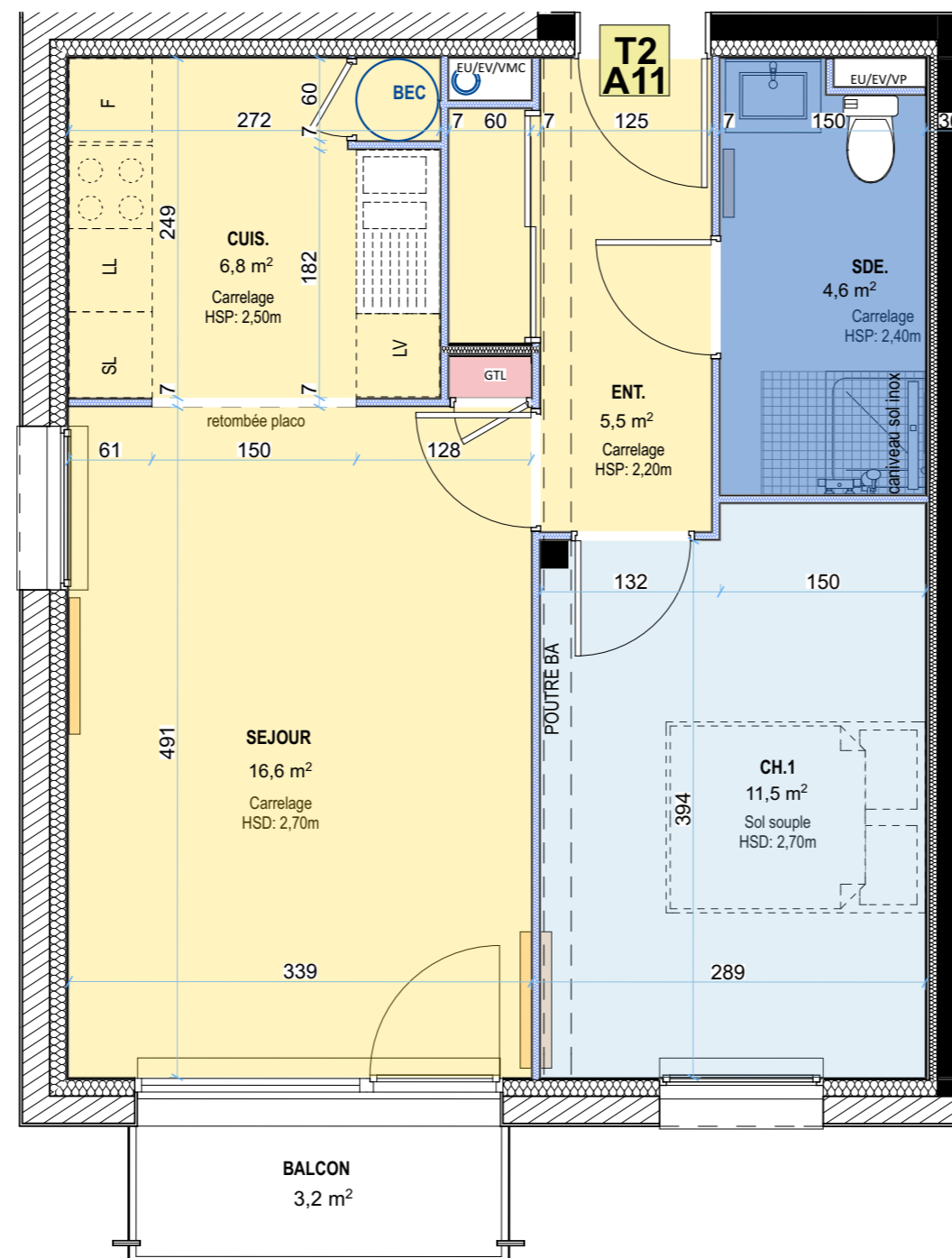
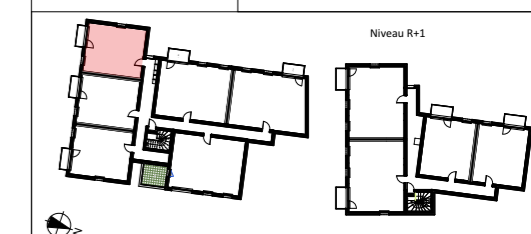
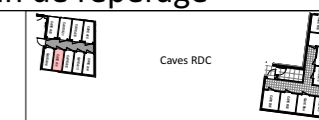
Surfaces Habitables

Entrée	5,50 m ²
Séjour	16,60 m ²
Cuisine	6,80 m ²
Chambre 1	11,50 m ²
Salle d'eau	4,60 m ²
TOTAL	45,00 m²

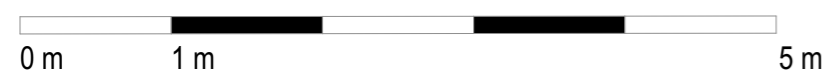
Surfaces Utiles

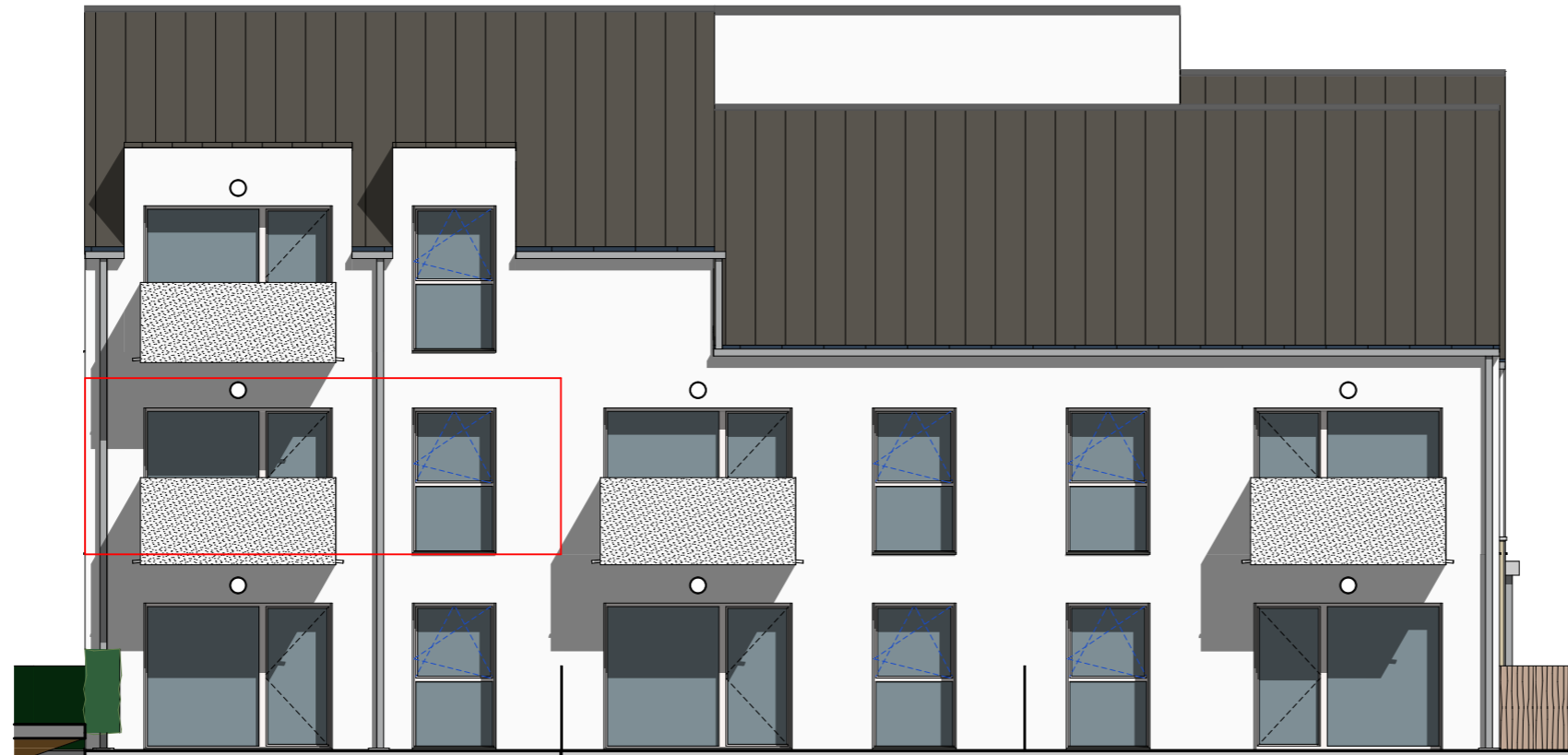
Cave	3,20 m ²
Balcon	3,20 m ²

Plan de repérage



Echelle 1/50^e





ELEVATION SUD



ELEVATION OUEST

**LES TERRASSES DE
KERGUEN**

Lotissement communal
22700 LOUANNEC
22 logements collectifs



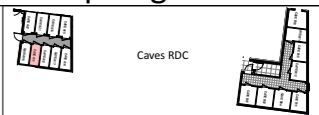
PLANS ETABLIS LE 16/09/2024

A11

TYPE

T2

Plan de repérage



Caves RDC

Niveau R+1

